


Name of the Center: Millennium Nucleus to Improve the Mental Health of Adolescents and Youths	
Type (Institute or Nucleus)	Nucleus
Acronym	Imhay
Reported period	17 December 2021 to 16 December 2024
Starting date of the Center	17 December 2021
Web Page	https://www.imhay.org/
Host Institutions	Universidad de Chile, Universidad Austral de Chile, Universidad de los Andes, Universidad de Talca
Address	Profesor Alberto Zañartu 1030, Independencia, Santiago, Chile.
Stage	<input type="checkbox"/> Nucleus first period <input checked="" type="checkbox"/> Nucleus Renewal (end of second period) <input type="checkbox"/> Institute (Continuity)
Number of years reported	3
End date of the Center	16 December 2024
Total amount	USD \$ 452,138 per three years
Total amount for the reported period	USD \$ 452,138

Contact Information	
Scientific Contact	Vania Martínez Nahuel, Full Professor, Universidad de Chile
Contact Information	vmartinezn@uchile.cl

<i>Nucleus Director Name</i>	<i>Nucleus Alternate Director Name</i>
Vania Martínez Nahuel	Álvaro Langer Herrera
<i>Director's Signature</i>	<i>Alternate Director's Signature</i>
	

Declaración de Veracidad
Por este medio declaro que la información entregada en este documento es fidedigna, y que adhiero a la Declaración de Singapur, contenida en la Resolución Exenta N° 157 del 24 de enero de 2013 de Conicyt, como guía global para una conducta responsable en la investigación.

FIRMA DE LA DIRECTORA

Index

1.1 Executive Summary	4
1.2 Resumen Ejecutivo	6
1.3 Brief History of the Center	8
1.4 Outstanding Achievements	9
1. Introduction.....	10
2. Scientific and technological research	12
3. Education and Capacity Building	24
4. Networking and other collaborative work.....	29
5. Outreach and connections with public and private sectors.....	32
6. Administration and Financial Status	36
7. Annexes	37
Annex 1. Researchers.....	37
Annex 2. Research Lines	40
Annex 3. Publications (Total or partially financed by Milenio)	42
Annex 4. Organization of Scientific Events	68
Annex 5. Education and capacity building.....	70
Annex 6. Networking and other collaborative work	73
Annex 7. Outreach	80
Annex 8. Connections with public and private sectors	85
Annex 9. Financial Status	89
Annex 10. Outstanding Activities	90
Annex 11. Negative or positive aspects that you would like to address in order to understand the context in which the center developed its work during the reported period.....	92
Annex 12. Relevant materials, products and activities carried out by the center	93

1.1 Executive Summary

The Millennium Nucleus for Improving the Mental Health of Adolescents and Youth (Imhay), funded by the Millennium Science Initiative, was established in 2018 with an initial three-year funding period (2018–2021), which was subsequently renewed for an additional three years (end of 2021–2024). Its primary objective has been to generate evidence that contributes to the development and evaluation of interventions aimed at improving the mental health of adolescents and youth, thereby supporting the creation and strengthening of public policies. Imhay has consolidated its work in cutting-edge research, training young researchers, fostering collaborations with national and international institutions, and disseminating knowledge.

This report presents the activities carried out during the renewal period (December 2021 to December 2024). During this time, Imhay's team was composed of 34 researchers from diverse disciplines (social sciences, health, neuroscience, among others), 56 students (undergraduate, master's, and doctoral), and 16 members of technical and administrative staff. The center was supported by four host institutions: the University of Chile, the Austral University of Chile, the University of Talca, and the University of the Andes, along with collaborations from other Chilean and international universities.

Imhay's Research Areas:

1. Individual, Relational, Community, and Societal Aspects: This line of research aims to analyze the interplay between protective and risk factors at the individual, relational, community, and societal levels that affect mental health, as well as the social consequences of mental health problems. A key activity includes a longitudinal study with university students involving the four host universities, along with the University of O'Higgins. This project is linked to the World Mental Health International College Student (WMH-ICS) collaboration network. Research within this area has resulted in publications addressing the prevalence of mental health problems, associated factors, service use, barriers to seeking help, and other topics.

2. Awareness and Promotion: This research area seeks to reduce the stigma associated with mental health problems, promote timely access to mental health services, and foster emotional well-being. One prominent project involves a mindfulness-based intervention with secondary school students and teachers, with participation from seven principal investigators. Additional publications from this area have addressed the positive development model, the use of technology in mental health, and the analysis of stigma toward schizophrenia, among other topics.

3. Universal and Targeted Prevention: This area focuses on evaluating the efficacy, effectiveness, and cost-effectiveness of preventive interventions targeting adolescents and youth, including those in the general population as well as those at risk. Projects in this area include interventions to prevent mental health issues among university students, parents, and school communities. The results of five interventions aimed at preventing substance use, bullying, anxiety, and other psychopathological problems have been published.

4. Detection and Early Intervention: The goal of this area is to develop, adapt, and evaluate tools, strategies, and interventions that enable better detection and early intervention for mental health problems. Notable projects include a mobile app-based

intervention for early detection and intervention in depression and anxiety, as well as an evaluation of a mixed intervention to reduce suicidal ideation. Publications from this area also include studies on the adaptation of tools to assess various mental health problems and analyses of predictive factors such as language, impulsivity, and ocular movement disturbances, among others.

Key Achievements During the Three-Year Period:

- **Scientific and Technological Research:** Imhay produced 119 scientific publications, presented 124 papers at national and international scientific conferences, and organized 10 national scientific events.
- **Education and Capacity Building:** Students participate under the mentorship of principal, associate, or junior researchers, with the aim of complementing their academic training and developing skills and knowledge for mental health research with adolescents and youth. Six training activities were conducted primarily for students.
- **Networking:** Imhay participated in six collaboration networks (four international and two national), including the WMH-ICS initiative of the World Health Organization, involving universities from 18 countries.
- **Outreach and Connections with Public and Private Sectors:** Imhay organized 30 dissemination activities and produced six outreach products for the general audience. Additionally, its researchers appeared in 345 regional, national, and international media outlets, establishing Imhay as a reference in adolescent and youth mental health. Imhay also strengthened its presence on digital platforms, reaching over 13.000 followers accessing mental health information and content. Establishing connections with other sectors of society is a key hallmark of the Nucleus, enabling collaboration with public and private institutions related to adolescent and youth mental health. Between end of 2021 and 2024, 54 partnerships were established, 32 of which involved public sector institutions, such as the Ministry of Health, Ministry of Education, National Youth Institute, and various municipalities.

Administration and Financial Management: Imhay is coordinated by a Council of Principal Investigators, led by the Nucleus Director, which meets monthly to plan scientific and outreach activities. Additionally, an executive team meets weekly to handle administrative and coordination tasks. The Nucleus's financial resources are primarily allocated to salaries for technical and administrative staff, the organization of scientific and outreach events, and supporting research activities, such as funding for conference registration fees for researchers and students.

1.2 Resumen Ejecutivo

El Núcleo Milenio para Mejorar la Salud Mental de Adolescentes y Jóvenes (Imhay), financiado por la Iniciativa Científica Milenio, fue creado en 2018 con un financiamiento inicial de tres años (2018-2021), posteriormente renovado por un periodo adicional de tres años (fines de 2021-2024). Su objetivo principal ha sido generar evidencia que contribuya al desarrollo y evaluación de intervenciones para mejorar la salud mental de adolescentes y jóvenes, con el fin de apoyar la creación y el fortalecimiento de políticas públicas. Imhay ha consolidado su labor en la investigación de frontera, formación de investigadores jóvenes, colaboraciones con instituciones nacionales e internacionales, y divulgación del conocimiento. Este informe presenta las actividades realizadas durante el periodo de renovación (diciembre de 2021 a diciembre de 2024). En este periodo, el equipo de Imhay estuvo compuesto por 34 investigadores de diversas disciplinas (ciencias sociales, salud, neurociencias, entre otras), 56 estudiantes (de pregrado, máster y doctorado) y 16 integrantes del personal técnico y administrativo. El centro contó con el respaldo de cuatro instituciones albergantes: la Universidad de Chile, la Universidad Austral de Chile, la Universidad de Talca y la Universidad de los Andes, además de la colaboración de otras universidades chilenas y extranjeras.

Áreas de Investigación de Imhay:

1. Aspectos Individuales, Relacionales, Comunitarios y de la Sociedad: Esta línea tiene como objetivo analizar la interrelación entre los factores protectores y de riesgo a nivel individual, relacional, comunitario y societal que afectan la salud mental, así como las consecuencias sociales de los problemas de salud mental. Entre las actividades destacadas se encuentra un estudio longitudinal con estudiantes universitarios, que incluye la participación de las cuatro universidades albergantes, además de la Universidad de O'Higgins. Este proyecto está vinculado a la red de colaboración World Mental Health International College Student (WMH-ICS). Dentro de esta línea se publicaron estudios sobre la prevalencia de problemas de salud mental, factores asociados, uso de servicios, barreras para la búsqueda de ayuda, entre otros temas.

2. Sensibilización y Promoción: El objetivo de esta línea es reducir el estigma asociado a los problemas de salud mental, promover la búsqueda oportuna de atención en los servicios de salud mental y fomentar el bienestar emocional. Uno de los proyectos destacados consiste en una intervención basada en mindfulness con estudiantes y profesores de educación secundaria, en la que participan siete investigadores principales. Además, se publicaron estudios sobre el modelo de desarrollo positivo, el uso de tecnologías y su relación con la salud mental, y el análisis del estigma hacia la esquizofrenia, entre otros.

3. Prevención Universal y Focalizada: Esta línea busca evaluar la eficacia, efectividad y costo-efectividad de intervenciones preventivas dirigidas a adolescentes y jóvenes, tanto de la población general como con factores de riesgo. Los proyectos incluyen intervenciones para prevenir problemas de salud mental en estudiantes universitarios, padres y comunidades escolares. Los resultados de cinco intervenciones, enfocadas en prevenir el uso de sustancias, el acoso escolar, la ansiedad y otros problemas psicopatológicos, han sido publicados.

4. Detección e Intervención Temprana: Su propósito es desarrollar, adaptar y evaluar herramientas, estrategias e intervenciones que permitan una mejor detección e intervención temprana de problemas de salud mental. Entre los proyectos destacados se incluye una intervención mediante una aplicación móvil para la detección e intervención temprana en casos de depresión y ansiedad, así como la evaluación de una intervención mixta para reducir la ideación suicida. Además, se han publicado estudios sobre la adaptación de instrumentos para evaluar distintos problemas de salud mental y análisis de factores que podrían contribuir a su predicción, como el lenguaje, la impulsividad y perturbaciones del movimiento ocular, entre otros.

Principales Logros del Trienio:

- **Investigación Científica y Tecnológica:** Se realizaron 119 publicaciones científicas, 124 presentaciones en congresos nacionales e internacionales, y se organizaron 10 eventos científicos de alcance nacional.
- **Formación de Capital Humano:** Los estudiantes que integran el Núcleo lo hacen bajo la tutoría de un investigador principal, adjunto o joven, con el propósito de complementar su formación académica, desarrollar competencias y adquirir conocimientos para la investigación en salud mental de adolescentes y jóvenes. En estos años, se llevaron a cabo seis actividades formativas dirigidas principalmente a estudiantes.
- **Redes de Colaboración:** Imhay formó parte de seis redes de colaboración, cuatro internacionales y dos nacionales, destacando su participación en la iniciativa WMH-ICS de la Organización Mundial de la Salud, que reúne investigadores de 18 países.
- **Divulgación y Conexiones con los Sectores Público y Privado:** En el ámbito de difusión científica, Imhay organizó 30 actividades y generó seis productos dirigidos al medio externo. Además, sus investigadores participaron en 345 apariciones en prensa regional, nacional e internacional, consolidando a Imhay como un referente en temas de salud mental de adolescentes y jóvenes para los medios de comunicación. Su presencia en plataformas digitales también se fortaleció, alcanzando más de 13 mil seguidores que acceden a información y contenidos sobre salud mental. El fortalecimiento de conexiones con otros sectores de la sociedad es un sello distintivo del Núcleo, facilitando la colaboración con instituciones públicas y privadas relacionadas con la salud mental de adolescentes y jóvenes. Entre fines de 2021 y 2024, se establecieron 54 vínculos con otras instituciones, de las cuales 32 pertenecen al sector público, como el Ministerio de Salud, el Ministerio de Educación, el Instituto Nacional de la Juventud y diversas municipalidades.

Administración y Gestión Financiera: La coordinación de Imhay está a cargo de un Consejo de Investigadores Principales, liderado por la directora del Núcleo, que se reúne mensualmente para planificar actividades científicas y de difusión. Además, un equipo ejecutivo, con reuniones semanales, se encarga de tareas administrativas y de coordinación general. Los recursos financieros del Núcleo se destinan principalmente al pago de salarios del personal técnico y administrativo, la organización de eventos científicos y de divulgación, y el apoyo a actividades de investigación, como el financiamiento de inscripciones en congresos para investigadores y estudiantes.

1.3 Brief History of the Center

The Millennium Nucleus Imhay is a research center hosted by four central and southern Chile universities. Imhay is funded by the National Agency for Research and Development (ANID, for its Spanish acronym) of the Ministry of Science, Technology, Knowledge, and Innovation of Chile through its Millennium Science Initiative program. This program finances the creation and development of research centers of excellence in the social, natural, and exact sciences, awarded through public competitions.

The center initiated its activities in October 2018 to generate evidence on interventions focused on improving the mental health of adolescents and young people. During the first three years of Imhay, numerous young researchers, adjunct researchers, and students joined and actively participated in several research and scientific dissemination activities. Additionally, several partnerships were forged with public and private institutions to collaboratively address youth well-being and mental health issues. Moreover, the center engaged with six collaborative networks, including the World Mental Health - International College Students initiative by the World Health Organization. This prominent global network addresses mental health issues among college students.

During the initial three years of the center, 24 researchers and 36 undergraduate, master's, and doctoral students actively participated. Sixty high-quality scientific publications were published, accompanied by over 100 presentations at national and international congresses. Furthermore, Imhay's researchers participated in 246 press appearances. Additionally, three suicide prevention courses were conducted in educational settings, attracting over 2,000 participants nationwide. Moreover, four communication campaigns were launched to promote well-being and prevent mental problems such as suicide risk.

At the end of 2021, Imhay was granted a three-year renewal, allowing for the continuation of its efforts, which started in 2018. For the renewal, Imhay participated in a public competition for research centers (financed by ANID), in which nine out of 87 proposals for Millennium Nuclei were approved.

The renewal of Imhay considers the lessons learned, achievements, pending challenges, and the evolving national and global scenario. The main objective of this renewal is to generate evidence that contributes to the development and evaluation of interventions to improve the mental health of adolescents and youth in order to support the creation and strengthening of public policies. In this new period, five female principal researchers from the four host universities were invited to foster interdisciplinary development within the Nucleus and promote gender equity. They were incorporated into various research projects and activities.

In 2024, Imhay's funding concludes for its second term. The following report summarizes the main achievements of the Nucleus during the last three years (end of 2021-2024).

1.4 Outstanding Achievements

The second period of Imhay (end of 2021-2024) was characterized by the strengthening of the Nucleus's work in scientific and technological research, education and capacity building, networking, and outreach and connections with public and private sectors. These achievements are attributable to the dedicated work of Imhay Researchers, students, and staff throughout its years of operation. As a result, Imhay has become a prominent leader in addressing mental health issues among adolescents and youth at the national level and has begun to be recognized internationally.

In terms of scientific productivity, Imhay researchers participated in 119 publications. Among them, 62% of the publications correspond to scientific articles in journals indexed in the Web of Science (WoS). They also participated in 124 congress presentations at international and national scientific events. Imhay researchers received a total of nine awards and recognition from other institutions. Senior researcher Ricardo Araya received the National Award for Applied and Technological Sciences, one of the most outstanding recognitions granted by the Ministry of Education of Chile, for his worldwide contribution to mental health research.

During this period, 56 students participated in the Nucleus, and 17 theses were completed. Three doctoral Imhay students participated in internships in foreign universities, one of which was related to a formal collaboration network. Further, one doctoral student and one researcher from international universities interned at Imhay. Students participated in 25 publications and 31 congress presentations. Six training activities were carried out, aimed at students and young researchers about research methods, communication in health, and tips for publishing opinion columns in the media.

Imhay researchers participated in 195 outreach activities, of which the Nucleus organized 30. Imhay researchers also participated in 345 press appearances. All this work allowed Imhay to disseminate its scientific work to a broader audience. Highlights include a communication campaign and a debate on topics of interest to young people with the private company Nestle, in which two Imhay students participated; a course about suicide prevention in educational settings in which more than 400 professionals participated; an [online free course](#) about suicide prevention through the Coursera website, and a radio section about mental health on the radio of Universidad de Chile, on which different Imhay researchers and students participated.

The researchers established 54 connections with public institutions, private organizations, and non-governmental organizations, 32 of which were with public institutions. These collaborations enabled Imhay to serve as a consultant for initiatives and policies related to adolescent and youth mental health in various Ministries (Health, Education, and Social Development and Family) as well as the National Congress.

Work also continued with five formal networks, one of which consists of the World Mental Health International College Students (WMH-ICS) initiative, which is part of the World Health Organization and led by the University of Harvard. Many researchers and students have participated in these formal networks in activities like joint presentations at scientific congresses, internships, and scientific articles, among others.

1. Introduction

a) Description of the Nucleus:

The Millennium Nucleus to Improve the Mental Health of Adolescents and Youths (Imhay) is a scientific research center that hosts researchers from different disciplines and universities, all converging in studying adolescent and youth mental health. Its main objective is to generate evidence that contributes to the development and evaluation of interventions to improve the mental health of adolescents and youth in order to support the creation and strengthening of public policies. Imhay's specific objectives are:

1. Analyze the interplay of protective and risk factors at individual, relational, community, and societal levels that affect mental health.
2. Analyze the social consequences of mental health problems.
3. Increase awareness and reduce the stigma surrounding mental health problems to promote timely access to mental health services.
4. Develop or adapt and evaluate programs aimed at strengthening socio-emotional and cognitive skills to improve wellbeing and prevent emotional distress, risk behaviors and psychopathology.
5. Develop or adapt and assess tools, strategies and interventions for better detection and early intervention of psychopathology.
6. Generate evidence that contributes to the strengthening of public mental health policies aligned with the experiences and needs of adolescents and young people.

Imhay is dedicated to ensuring that its scientific activities have social value, reduce stigma, improve interventions for mental health issues, and provide evidence-based mental health information.

Imhay researchers, students, and administrative staff came from the four host institutions (Universidad de Chile, Universidad Austral de Chile, Universidad de Talca, and Universidad de los Andes), as well as other Chilean and foreign institutions (Universidad San Sebastián, Universidad Católica de Temuco, and King's College London). Imhay researchers study the epidemiology, social determinants, and neurobiological basis of mental health disorders in adolescents and young people using different methodologies. They have also evaluated interventions in educational settings that incorporate Information and Communication Technologies (ICTs) and actively involve young people in their design. Likewise, they have contributed to various public institutions like Ministries of Health, Education, and Social Development and Family to strengthen public policies that promote the well-being of adolescents and young people.

Over the past six years, Imhay has established itself as a national reference research center in adolescent and youth mental health, gaining international recognition. The center has been involved in international advisory activities related to adolescent mental health and technology, telemedicine, digital security, and the evaluation of psychotic symptom scales.

b) Research Lines

Imhay has four research lines coordinated by groups of principal investigators (PIs). The research lines are related with the Imhay's specific objectives (Annex 2).

1. Individual, Relational, Community, and Societal Aspects (PIs Marta Silva, Alicia Núñez, and Yanira Zúñiga). The line aims to analyze the interplay of protective and risk factors affecting mental health at individual, relational, community, and societal levels, as well as the social consequences of mental health problems. Studies conducted in this line contribute to highlighting the influence of social determinants on mental health, the prevalence of mental disorders in various groups, and patterns of health services utilization. Disciplines involved included experimental psychology, other psychological fields, public health (epidemiology), cultural and social anthropology, and sociology.

2. Awareness and Promotion (PIs Isabel Pavez and Vania Martínez). This line aims to raise awareness and reduce the stigma surrounding mental health problems to facilitate timely access to mental health services and promote emotional well-being. Research and activities in this line contribute to encouraging adolescents and young people to seek help from mental health services and enhancing their emotional well-being. Disciplines related to this line are educational and cognitive psychology, clinical psychology, other psychological fields, and journalism.

3. Universal and Targeted Prevention (PIs Jorge Gaete, Carolina Iturra, and Álvaro Langer). This line aims to evaluate the efficacy, effectiveness, and cost-effectiveness of prevention interventions targeting adolescents and young people from the general population, those with risk factors, or those already experiencing psychopathology. The approach emphasizes participatory design and the use of ICTs. Research includes evaluations of preventive interventions addressing mental health problems, alcohol and drug use, and school violence. Disciplines involved include clinical psychology, educational and cognitive psychology, hygiene, and public health (epidemiology).

4. Detection and Early Intervention (PIs Daniel Núñez and Pablo Gaspar). This line aims to develop or adapt and assess tools, strategies, and interventions for better detection and early intervention of psychopathology. Research focuses on developing and adapting various tools for detecting psychopathology, such as questionnaires, and on developing and adapting early interventions for mental health problems in adolescents and young people. Clinical psychology, hygiene, and public health (epidemiology) are involved.

c) Organization of the research team

Imhay is coordinated by the director, alternate director, and the Council of Principal Researchers, which meet monthly to plan and make decisions regarding scientific activities. Additionally, a management team is responsible for coordinating and implementing various scientific, administrative, and dissemination activities. Although research lines are coordinated by groups of PIs, collaboration among researchers is actively encouraged within the Nucleus. Currently there are five research projects that bring together principal researchers from different research lines.

Imhay also maintain collaborative relationships with other Millennium Centers, including the Millennium Nuclei MEMAT and EDSUP, and the Millennium Institutes MICARE and MIDAP.

2. Scientific and technological research

a) Development and achievements of each research line

Between the end of 2021 and 2024, great progress has been made in each research line. Information about the research lines can be found in Annex 2. The main results achieved by each line are shown below:

1. Individual, Relational, Community, and Societal Aspects

This research line seeks to contribute to the analysis of various factors affecting mental health. Numerous articles have been published on the prevalence of mental health problems among adolescents and young people, including depression, anxiety, stress, alcohol use disorder, problematic substance use, suicide, non-suicidal self-injury, sleep quality, and psychotic-like experiences. Additionally, studies have explored factors associated with mental health issues, such as COVID-19, social and economic influences, religiosity, experiential avoidance, self-compassion, adverse childhood experiences, emotion regulation, social protest, indebtedness, social contagion, parental practices, hormonal contraceptives, school victimization, and discrimination.

Research has also focused on the use of mental health services, barriers to seeking professional help, and the mental health challenges faced by disadvantaged populations, such as LGBTQ+ individuals and women. Other studies examined public discourses among youth during the pandemic, the role of women in rural settings, digital exclusion in rural areas, neuro-digitalization, life stories of graduate students, therapists' values, and trends in digital policy.

The projects that are part of this research line are:

- Longitudinal Study of Mental Health in College Students (2020-ongoing). It is a multicenter study that is part of the collaborative network WMH-ICS, involving the four host universities of Imhay plus the Universidad de O'Higgins. Imhay researchers Vania Martínez, Álvaro Langer, Daniel Núñez, Jorge Gaete, Jimena Carrasco, and Marta Silva are participating.
- Learning trajectories of undergraduate and graduate university students and indigenous professionals in the disciplines of Mathematics and Engineering in Chilean universities from a gender perspective (2024-2028). Regular Fondecyt¹ N°1242006 led by Marta Silva. Also, Isabel Pavez, Vania Martínez, and Álvaro Langer from Imhay are participating.
- Bio sociality and configuration of the subject of law with a diagnosis of psychiatric illness in Chile (2024-2028). Regular Fondecyt N°1241022 led by adjunct researcher Jimena Carrasco.
- Positive development, mental health and psychosocial variables involved: Towards a comprehensive model in Chilean university students (2020-2023). Initiation Fondecyt N° 11200984 led by young researcher Ana Barrera.

¹ Fondecyt = Fondo Nacional de Desarrollo Científico y Tecnológico [National Fund for Scientific and Technological Development] is one of the leading research funds in the country to encourage scientific research in all areas of knowledge.

Also, different Imhay researchers participate as co-investigators of other projects related to this area of research. Jorge Gaete participates in the Regular Fondecyt N°1191282 “Associated factors to readmission among substance use disorder (SUD) patients under treatment between 2010 and 2018” (2019-2022) and N°1221349 “Parenting children and adolescents with intellectual disabilities and challenging behaviors: a mixed-methods study (2022-2024)”. Reiner Fuentes participates in the project “Construction of scales for the multidimensional and contextualized study of youth religiosity in Chile” (2023-2024), and Pablo Gaspar in the Regular Fondecyt N°1210261 “Hyperandrogenism during prenatal and pubertal development alters functional brain networks compromising social cognition in daughters of women with Polycystic Ovary Syndrome: a double hit hypothesis” (2021-2025).

This research line has advanced the understanding of the mental health challenges faced by adolescents and youth in Chile, as well as the various factors that influence their mental health. These findings are particularly relevant for designing interventions and for informing Imhay's other research lines. A pending challenge remains to investigate the social consequences associated with mental health problems during youth.

2. Awareness and promotion

This research line focuses on raising awareness about mental health problems and promoting emotional well-being among youth. The topics addressed include the development of the Positive Development Model for university students through a literature review and cultural adaptation of assessment instruments. Additional studies explored the use of digital technologies and mental health, the digital skills of children living in rural environments, and an analysis of TikTok content from the perspective of children.

Other research examined stigma towards individuals with schizophrenia in the media, literature reviews on mental health research involving adolescents and youth in Chile, tools to assess well-being in adolescents, the importance of scientific evidence in school-based mental health interventions, the definition of clinical resilience, and the role of nature contemplation in the mental health of young people. Furthermore, a researcher contributed to an international consensus on sports psychiatry.

The projects associated with this research line are the following:

- Application of an intervention based on mindfulness in secondary education. Impact on teaching-learning processes and on the promotion of mental health and well-being of teachers and students (2022-2025). Regular Fondecyt N°1221034, led by Álvaro Langer. Imhay co-researchers are Vania Martínez, Jorge Gaete, Daniel Núñez, Carolina Iturra, Marta Silva, and Alicia Núñez.
- Rural girls and adolescents benefiting from ICT Scholarships: the role of the educational and family context in their development of digital skills and school performance on access and use of technologies (2020-2023). Initiation Fondecyt N°11200039, led by Isabel Pavez.

Also, Isabel Pavez participates as a co-researcher in the Regular Fondecyt N°1210740, titled “Digital inequality in a pandemic: strategies for technological inclusion in vulnerable communities in rural and urban areas of Chile” (2020-2023), and Lionel Brossi as co-

researcher in the Regular Fondecyt N°1210631 titled “Learnings in current youth activisms. Contributions to social justice education” (2021-2023).

Advances were made in mapping the Chilean literature on the mental health of adolescents and youth, as well as in promoting mental health through various approaches, including the Positive Development Model, digital technologies for mental health, nature contemplation, and resilience. Additionally, a meta-analysis on interventions to reduce stigma was recently published in [JAMA Network Open](#). A remaining challenge is to develop research focused specifically on reducing stigma toward mental health issues.

3. Universal and targeted prevention

This research line focuses on evaluating the efficacy, effectiveness, and cost-effectiveness of prevention interventions for mental health problems. Published articles include findings from interventions addressing various issues in adolescence and youth, such as *Unplugged* and the *Icelandic Prevention Model* for substance use prevention, *KiVa* for bullying prevention, *GenerationPMTO* to improve parenting practices, and forest bathing to reduce anxiety in college students. Additionally, intervention protocols, systematic reviews, and a literature review on the effects of climate change on mental health were published, along with book chapters on depression prevention.

Several research projects, led by principal researcher Jorge Gaete, are being carried out in this research line.

- Unplugged, a Drug Use Prevention Program: Adaptation and Evaluation of Effectiveness Among Chilean Students (2018-2023). Regular Fondecyt N°1181724.
- Evaluation of the Impact of the Socioemotional Development Program 'The New Haven' in the Prevention of Substance Abuse Among Adolescents (2020-2023). Fonis N° SA19I0115.
- Prevention of Substance Abuse Among Adolescents Through the Life-Skills Training Program for Parents: Pilot Study of Acceptability and Feasibility (2019-2022). Funded by Universidad de los Andes and the Municipality of Lo Barnechea.
- Prevention of Substance Abuse in High School Adolescents Through the LifeSkills Training High School Program: Pilot Study of Acceptability and Feasibility (2019-2022). Funded by Universidad de los Andes and the Municipality of Lo Barnechea.
- Evaluation of the Implementation of the 'Saliendo Aprendo' Program to Improve Emotional Regulation Skills in 5th and 6th Grade Students (2022-2023). Funded by the Non-Government Organization San Carlos de Maipo.
- Design of policies and action plans for student mental health care and prevention of suicidal behavior in undergraduate students at the Universidad de los Andes (2023-2025). Institutional Development Fund, Ministry of Education.

Advances were made in the publication of the results of these prevention interventions, which offer promising opportunities for the mental health of local youth. The pending challenge of this research line is the dissemination of the interventions that are effective to schools, municipalities, and organizations to prevent mental health problems in young people.

4. Detection and early intervention

This research line focuses on designing and adapting strategies for the detection and early intervention of mental health problems. Published articles addressed various topics, including:

- Literature reviews: Early interventions in psychosis, speech disturbances in individuals at high risk of psychosis, and internet-supported interventions. Protocols were also published on interventions to reduce suicidal ideation and a multicenter study on high clinical risk of psychosis.
- Instruments: Tools for identifying psychopathological disorders or factors such as post-traumatic stress disorder, generalized anxiety disorder, sleep problems, impulsivity, physical and mental health, psychosocial functioning, trauma, suicidal ideation, coronavirus-associated anxiety, cognitive impairment, experiential avoidance, and psychotic experiences. The Spanish adaptation of the international consensus on treatment outcome measures for depression and anxiety in children and young people, and the harmonization of two instruments to measure clinical high-risk syndrome for psychosis. These contributions enhance the understanding, detection, and treatment of mental health disorders and their underlying factors.
- Mental disorder-related topics: Language use for identifying individuals with psychotic disorders, the relationship between psychotic experiences and other symptoms, eating disorders, impulsivity and compulsivity linked to substance use and depression, cognitive issues in schizophrenia, eye movement disturbances in schizophrenia, and imitative inhibitory control in psychotic experiences.
- Intervention outcomes: Mindfulness for anxiety, depression, and stress; a participatory study on adapting a mobile app for anxiety and depression treatment among young people; case analyses of mindfulness for schizophrenia; and compassion-focused therapy for borderline personality disorder.

The research projects that are part of this research line are:

- Effectiveness of an Application for Cell Phones for Early Intervention of Depression and Anxiety in Young University Students (2022-2025). Regular Fondecyt N°1221230, involving researchers Vania Martínez (PI), Álvaro Langer, Jorge Gaete, Daniel Núñez, and Alicia Núñez.
- Evaluation of the Effectiveness of an Online Intervention Based on Cognitive-Behavioral Therapy to Reduce Suicidal Ideation in High School Adolescents in Chile (2021-2024). Regular Fondecyt N°1210093, led by Daniel Núñez (PI) and Jorge Gaete.
- Development and Evaluation of a Recommendation Guide and Competency Training Program for Psychosocial Intervention with Individuals, Families and Communities Exposed to a Suicide Death (2023-2025). Fonis N°SA23I0181 by Álvaro Jiménez, Vania Martínez, Graciela Rojas, Daniel Núñez, and Marta Silva.
- Development and Evaluation of a Program Based on Digital Technologies for the Detection of Suicidal Risk and the Promotion of Help-Seeking in University Students: A Pilot Study of Feasibility, Usability, and Acceptability (2020-2023).

Postdoctoral Fondecyt N°3200944, led by Álvaro Jiménez and patrocinated by Vania Martínez.

- Design and Piloting of a Device to Evaluate Emotional Regulation Processes in Young University Students (2019-2022) a project led by Daniel Núñez and funded by the Universidad de Talca.
- Analysis of Linguistic Markers of Schizophrenia in Population with Mental States at High Risk of Psychosis (2019-2022). Initiation Fondecyt N°11191122 led by Alicia Figueroa.
- Early Signs of Formal Thought Disorder: Mapping the Functionality of Communicative Interactions in Clinical High-Risk Mental States (2024-2028). Regular Fondecyt N°1241618 led by Alicia Figueroa.
- Impulsivity and Sleep Quality as Predictors of Symptoms of Addictive Behaviors and Depression in Emerging Adulthood (2024-2028), Regular Fondecyt N°1241869, led by Alvaro Vergés.

Additionally, Pablo Gaspar is the co-investigator representing Chile in the project "Trajectories and Predictors in the Clinical High Risk for Psychosis Population: Prediction Scientific Global Consortium," funded by the National Institute of Health in the United States (N° U01MH124631), which involves multiple centers from different countries.

Advances were made in the evaluation and publication of tools to assess mental health problems, as well as in the design and evaluation of early interventions. However, a pending challenge for this research line is the publication of results from ongoing projects. Given that intervention studies typically require more time to be conducted, the dissemination of findings will follow the completion of these studies. For instance, the results of the project aimed at reducing suicidal ideation in adolescents, led by Daniel Núñez, were published after the conclusion of the Nucleus. This [study](#) demonstrated positive effects on reducing suicidal ideation, depression, anxiety, and feelings of helplessness.

b) Productivity

Between the end of 2021 and 2024, Imhay researchers authored 119 scientific publications. Of these, 74 were indexed in the Web of Science (WoS), 6 in Scopus, 4 in SciELO, 13 in other databases such as Latindex, and 22 were books or book chapters. During Imhay's first period, 60 publications were produced, so this second period represents a 100% increase in the center's productivity.

The articles of this period are presented in Annex 3, with a summary shown in Table 3.1 below. Among the publications indexed in WoS, 29 were published in Q1 journals, 24 in Q2 journals, 10 in Q3 journals, 10 in Q4 journals, and 1 in a journal that has not yet been ranked. Notably, 71.6% of WOS publications were in Q1 and Q2 journals, reflecting the high quality of the research conducted by the Nucleus.

According to research lines, 48 publications are part of the Individual, Relational, Community, and Societal Aspects research line, 39 to the Detection and Early Intervention research line, 17 to the Universal and Targeted Prevention research line, and 15 to the Awareness and Promotion research line.

Internal collaboration is promoted among researchers and students. In total, 40.3% of the articles ($n = 71$) are authored by two or more researchers (Annex 3.7), and 21.0% of the publications ($n = 25$) are co-authored between Imhay researchers and students.

Regarding collaboration with international researchers, 45 publications (37.8%) included co-authors from other countries, such as the United States of America, the United Kingdom, Spain, and Australia. Seven of these publications are multicenter articles in which Imhay researchers participated (publications 36, 40, 43, 46, 47, and 48 in Annex 3.1.1, and publication 30 in Annex 3.6.1).

Imhay promotes the publication of scientific articles in open-access journals to encourage the dissemination of the scientific knowledge generated at the center to a broader audience. In total, 68 articles (57.1%) were published in open-access or free-to-read journals.

In terms of research projects, Imhay researchers participated in 26 projects in this period. Eight researchers were awarded research projects through competitive funds such as Fondecyt during this period. Seven projects involve two or more Imhay researchers.

Table 3.1. Number of publications during 2022-2024.

Category of Publication	MSI Center Members	2022	2023	2024	Total number of publications
ISI/WoS Publications or Similar to ISI/WoS Standard	Principals Researchers	22	18	18	58
	Other Researchers	3	8	5	16
Scopus Publications or Similar to Scopus Standard	Principals Researchers	0	2	2	4
	Other Researchers	0	1	1	2
SciELO Publications or Similar to SciELO Standard	Principals Researchers	0	1	0	1
	Other Researchers	1	0	2	3
Scientific Books and chapters	Principals Researchers	4	9	2	15
	Other Researchers	2	4	1	7
Other Scientific Publications	Principals Researchers	5	2	3	10
	Other Researchers	1	0	2	3
Total of Publications		38	45	36	119

Notes: The categorization of the publications was based on the information provided by each journal on its website. Each journal was categorized in only one indexation: WoS, Scopus or SciELO.

c) Outstanding publications

The following publications were chosen as outstanding publications:

1. The article “Automatic language analysis identifies and predicts schizophrenia in first-episode of psychosis” (article 9 in Annex 3.1.1), authored by Imhay researchers Alicia Figueroa and Pablo Gaspar, as well as other researchers, was chosen because it presents innovative results regarding the use of language for detection of first-episode of psychosis and was published in *Schizophrenia*, a critical journal in psychosis research (Q2, impact factor 3.0 in Journal Citations Reports [JCR], 2023). These results are part of the Detection and Early Intervention research line, which seeks to develop tools to detect psychopathology better.
2. The article “Social contagion, violence, and suicide among adolescents” (article 30 in Annex 3.1.1) by Imhay researchers Vania Martínez and Álvaro Jiménez was chosen as an outstanding publication for several reasons. It was published in a critical Q1 journal in psychiatry (*Current Opinion in Psychiatry*) with an impact factor of 7.5 (JCR, 2023). Notably, publishing in this journal requires an invitation. The article focuses on suicidality, a central theme that the Nucleus has extensively worked on. This article belongs to the research line Individual, Relational, Community, and Societal Aspects.
3. The article “Differences in mental health problems in LGBT+ first year college students in Chile during the pandemic” (article 50 in Annex 3.1.1) was chosen for several reasons. It shows the research results of the Chilean data of the WMH-ICS formal network collaboration. It focuses on a group of special attention due to its high prevalence of mental health problems. It was authored by six Imhay researchers (two young and four principal researchers) and was published in *Social Psychiatry and Psychiatric Epidemiology*, a Q1 journal with an impact factor of 3.6 (JCR, 2023). This article is part of the Individual, Relational, Community, and Societal Aspects research.
4. The publication “Acceptability, feasibility and fidelity of the culturally adapted version of Unplugged (“Yo Se Lo Que Quiero”), a substance use preventive program among adolescents in Chile: a pilot randomized controlled study” (article 55 in Annex 3.1.1) shows the results of prevention intervention *Unplugged*, a project led by principal researcher Jorge Gaete. An Imhay student and senior researcher also participated in the publication. This article reflects the center's efforts to evaluate preventive interventions and belongs to the Targeted and Universal Prevention research line. It was published in *BMC Public Health*, a Q1 journal with an impact factor of 3.5 (JCR, 2023).
5. The article “Evidence for validity, reliability and measurement invariance of the emotion regulation questionnaire for children and adolescents (ERQ-CA) in secondary students from Chile” (article 17 in Annex 3.1.1) was published in *Current Psychology*, Q2, impact factor 2.5 (JCR, 2023). The article was chosen as an outstanding publication because it shows the efforts of the Nucleus to assess instruments that could be used for research purposes and explore different dimensions related to mental health. Two Imhay researchers author this article and is part of the research line Individual, Relational, Community, and Societal Aspects.

d) Congress Presentations

The presentations at congresses are essential to disseminate the research results carried out in the Nucleus in academic environments. The participation of researchers of the Nucleus in important congresses reinforces the positioning of Imhay as a center of excellence in adolescent and youth mental health research. To promote the presentation of students and researchers at scientific conferences, Imhay has established a program that provides financial support for participation. This support may cover registration fees and travel expenses. Between the end of 2021 and 2024, funding was provided to 16 researchers and 11 students to present oral communications and posters at national and international scientific events.

During these years, Imhay researchers participated in 124 congress presentations, with 72 national and 52 international events. Of the 124 congresses presentations, 31 correspond to Imhay's student presentations. A summary of the congress presentations is provided in Table 3.2.

Imhay researchers have had an essential presence in national congresses organized by scientific societies of psychiatry and neurology. In these congresses, they have held annual thematic seminars on the results of research carried out at the Millenium Nucleus. Researchers have presented interventions to prevent suicidal behavior and substance use, promote well-being, and early detection of psychosis risk.

The most critical presentations during this period were:

1. In 2022, principal researcher Daniel Núñez, in collaboration with Dr. Heather Wastler from The Ohio State University, presented the oral communication "Relationships between psychotic experiences, emotional regulation and suicidal ideation in general population adolescents". The XXXIX Sopnia Congress awarded this presentation as one of the best oral presentations of the congress. Among its results, it is observed how maladaptive emotional strategies, such as expressive suppression, could be a transdiagnostic risk factor for suicidal ideation.
2. In 2023 Imhay researchers Pablo Gaspar, Álvaro Langer, and Rocío Mayol organized a pre-congress workshop at the "IEPA 14th International Conference on Early Intervention in Mental Health" titled "Early Intervention in Psychosis Risk: Therapeutic Skills for Latin America". This open hybrid activity was presented in Spanish, with particular emphasis on engaging the Latin American audience. This scientific workshop also served as part of the Nucleus' outreach initiatives.
3. In 2024, Imhay researchers Álvaro Jiménez, Vania Martínez, and doctoral student Daniela Lira, with other researchers, were awarded the best oral presentation in the LXXIX Sonepsyn Congress for their work "Development and evaluation of a natural language processing model for suicide risk detection (RIGOBERT)".

Table 3.2. Number of congresses presentations 2022-2024.

Type of researcher	Type of presentation	2022		2023		2024		Total	
		N	I	N	I	N	I	N	I
Principals Researchers	Conferences, oral communications, poster communications, others	14	7	11	6	19	14	44	27
	Invited presentations (not included in above row)	5	1	2	7	1	0	8	8
Other researchers (Adjunct, Senior, Young, and Postdoctoral Researchers)	Conferences, oral communications, poster communications, others	2	3	8	10	8	2	18	15
	Invited presentations (not included in above row)	2	0	0	2	0	0	2	2
Students	Conferences, oral communications, poster communications, others	3	4	6	2	9	7	18	13
	Invited presentations (not included in above row)	0	0	0	0	0	0	0	0

Notes. N = National. I = International.

e) Other achievements

Patents

No patents were registered.

Intellectual property

No intellectual property was registered.

Organization of Scientific Events

Imhay organized ten scientific events between the end of 2021 and 2024 (two international and eight national). These events were aimed at undergraduate and graduate students, university professors, and professionals related to the center's research themes. Information on the events is in Annex 4.

The international events organized consisted of the IV version of the conference “Clinical and Therapeutic Challenges in Psychosis”, which promotes the exchange of scientific knowledge in the field of psychosis. Several leading academics in the area, both from Chile and other countries, participated in this conference, and more than 560 people registered. This activity is part of the research line Detection and Early Intervention. The second international activity consisted of an in-person and online seminar entitled “Digital interventions in mental health for university students”. This activity was held in London and was attended by researchers from Imhay (Vania Martínez and Ricardo Araya) and

two international universities (Daniel Vigo from the University of British Columbia and Maria-Christina Vourda from King's College London). More than 40 people participated in the seminar. This activity is part of the Awareness and Promotion, and Universal and Targeted Prevention research lines.

Six seminars and workshops were conducted during the Nucleus' training activities, inviting students and researchers from the Imhay Millenium Nucleus, MEMAT Millennium Nucleus, and MICARE Millennium Institute to participate. These activities aimed to complement the training of students and young researchers, and they were carried out online to invite participants from different parts of the country. Each activity had more than 30 participants. Four of these activities were conducted by Imhay researchers, who shared their knowledge on specific topics related to research methods and recommendations for scientific publications. The other two activities were carried out by external professionals who shared their understanding of communication and health and tips on how to write opinion columns in the media.

The seminar “Mental health in higher education students” was held at the University of Valparaíso and included a presentation by Dr. Corina Benjet, a renowned researcher at the Instituto Nacional de Psiquiatría Ramón de la Fuente Muñiz of Mexico. The activity presented the advances of the Fondecyt project N°1221230 “Efficacy of an application for cell phones for early intervention of depression and anxiety in young university students” led by Dr. Vania Martinez. Imhay doctoral students Daniela Lira and Marcelo Crockett also presented the progress of their theses. The activity was attended by about 15 research assistants, students, researchers, and staff of the Directorate of Student Affairs of the Universidad de Valparaíso.

The Colloquiums Doctorate in Psychology consisted of 29 seminars held during 2023 and organized by the principal researcher, Daniel Núñez, in the context of the Doctorate in Psychology at the Universidad de Talca. In this activity, leading national and international researchers presented updates on psychology-related research topics. Imhay researchers Alvaro Vergés, Rocío Mayol, Jorge Gaete, José Luis Ulloa, Álvaro Langer, and Álvaro Jiménez presented in six of these seminars. More than 300 participants attended the seminars online and in person.

Scientific Editorial Boards

Imhay researchers participate in 13 Editorial Committees in national and international journals. Four of these journals are indexed in WoS, two in Scopus, two in SciELO, and four in other types of indexing. Two journals have not been indexed yet because they are new journals. The list of journals and editorial committees is shown in Table 3.3.

Table 3.3. Participation of Imhay researchers in scientific editorial boards.

Researcher	Journal	Category of publication
Jorge Gaete	British Journal of Psychiatry International	ISI/WoS
Álvaro Vergés	Journal of Studies on Alcohol and Drugs	ISI/WoS
Álvaro Vergés	Alcohol: Clinical and Experimental Research	ISI/WoS
Álvaro Vergés	Personality and Social Psychology Review	ISI/WoS
Carolina Iturra	Comuni@cción: Revista de Investigación en Comunicación y Desarrollo	SciELO
Álvaro Langer	Psychology, Society, & Education	Scopus
Marta Silva	Estudios Pedagógicos	Scopus
Ana Barrera	Revista Informes Psicológicos	Other (EBSCO)
Álvaro Jiménez	Castalia - Revista de Psicología de la Academia	Other (Latindex)
Vania Martínez, Pablo Gaspar	Revista Chilena de Psiquiatría y Neurología de la Infancia y Adolescencia	Other (Lilacs and Latindex)
Jimena Carrasco	Revista Interinstitucional Brasileira de Terapia Ocupacional	Other (Lilacs)
Vania Martínez	PLOS Mental Health	Other (Not indexed yet)
Jorge Gaete	Social and Emotional Learning: Research, Practice, and Policy	Other (Not indexed yet)

Awards

Between the end of 2021 and 2024, Imhay researchers and Imhay as a group received nine awards and recognitions for their contributions to their disciplines by different organizations. Senior researcher Ricardo Araya received the highest recognition from the Ministry of Education of Chile, the National Award for Applied and Technological Sciences, for his contribution to mental health research. Ricardo Araya was the first mental health professional to receive this award. The awards are presented in the table 3.4 below:

Table 3.4. Awards given to Imhay researchers during 2022-2024.

Researcher	Institution	Award	Year
Ricardo Araya	Ministry of Education of Chile	The National Award for Applied and Technological Sciences is the highest recognition granted by the State to Chileans who distinguish themselves for their excellence, creativity, transcendent contribution to the national culture and to the development of their respective fields and areas of knowledge	2022
Vania Martínez	Instituto Nacional General José Miguel Carrera (public school)	Recognition given for the significant collaboration of Dr. Martínez to this important Chilean school	2022
Vania Martínez	Society of Neurology, Psychiatry, and Neurosurgery of Chile	Recognition awarded to outstanding women in various fields of medicine, who have contributed to medicine and health in Chile	2022
Graciela Rojas	Society of Neurology, Psychiatry, and Neurosurgery of Chile	Recognition awarded to outstanding women in various fields of medicine, who have contributed to medicine and health in Chile	2022
Rocío Mayol	Women entrepreneurs and El Mercurio Newspaper	Recognition of women leaders in Chile who, from different areas, contribute to the economic, social, and cultural development of the country	2022
Daniel Núñez	Society of Child and Adolescent Psychiatry and Neurology of Chile	Prize awarded to the best oral communications presented at the XXXIX Sopnia 2022 Congress in the psychiatry category	2022
Jimena Carrasco	Department of Occupational Therapy and Occupational Science, University of Chile	Dr. Jimena Carrasco was recognized for her contributions to the development of the Occupational Therapy discipline.	2023
Imhay researchers Vania Martínez, Marcelo Crockett, and Belén Vargas (Imhay student)	Chilean Society of Pediatrics	Second place for the best articles published in the journal Andes Pediátrica (general category)	2024
Imhay researchers Álvaro Jiménez, Vania Martínez, and Daniela Lira (Imhay student)	Society of Neurology, Psychiatry, and Neurosurgery of Chile	Best oral presentation in the LXXIX Sonepsyn Congress	2024

3. Education and Capacity Building

a) Education, Training and Capacity Building

The participation of students in the different activities developed by the Millennium Nucleus Imhay is fundamental. Imhay allows its students to participate in a research center that generates interdisciplinary knowledge in adolescent and youth mental health. The training of students is designed to complement the training they receive in their respective undergraduate and graduate programs. This program fosters the development of competencies useful for research in adolescent and young mental health. The Nucleus promotes technical competencies in research (e.g., research methodology, presentation of results, scientific writing, and data analysis) and relational competencies (e.g., teamwork skills, communication, and creativity).

Students join the research area of the Nucleus through the sponsorship of one of the principal, adjunct, or young researchers. Undergraduate or graduate students are selected following two criteria: a) to be currently working with one of Nucleus' researchers and b) to be carrying out a thesis or graduation project related to one of the Nucleus' lines of research. Students participate in a research team led by a researcher who meets periodically. They work closely with the researchers and other students to develop skills relevant to their training and graduation project. Imhay encourages its students to participate in research projects and promotes the use of data collected for these projects in the students' theses. Imhay researchers also encourage student participation in Imhay scientific meetings ('Research Meetings' and other activities organized by Imhay) and other external scientific meetings, such as congresses and conferences. Imhay also encourages student participation in scientific publications in academic journals.

The Research Meetings are activities organized by Imhay that are focused on student participation. They are invited to present their research projects, theses, or other scientific communications to receive feedback from other Imhay researchers and students. In addition, the Nucleus holds an Annual Community Meeting where Imhay's research is critically discussed, allowing for further planning and collaboration between students and researchers. The researchers also promote the integration of students into the work of the Formal Collaborative Networks, and students are invited to participate in scientific and outreach events organized by the center. In all these activities, students can interact with other researchers and students of the center from different disciplines, research groups, and universities. During these three years, Imhay organized three Research Meetings and three Annual Community Meetings in Santiago and Valdivia.

In addition, Imhay organized six training activities for students and researchers (also mentioned in Organization of Scientific Events). These activities aimed to complement the formal academic training of students.

Student funding sources are external, through scholarships and/or self-financing. Students can receive grants to register for conferences and scholarships to translate scientific articles into English. During these years, annual calls were made to finance attendance at congresses, where students were invited to participate. Registration fees for scientific congresses were paid for 11 students. In addition, registration fees were paid for two students to participate in the two-day symposium workshop "Suicidality: an update

on how to understand, assess and intervene effectively,” in which researchers Álvaro Jiménez and Vania Martínez participated.

Imhay has no formal affiliation with undergraduate or graduate programs, but principal and adjunct researchers teach in various master’s and doctoral programs belonging to the host universities. Imhay students are part of the following programs:

- PhD in Psychotherapy (Universidad de Chile and Pontificia Universidad Católica de Chile), Psychology and Mental Health (Universidad San Sebastián), Biomedical Sciences (Universidad de Chile), Medical Sciences (Universidad de Chile, Universidad Austral de Chile), Psychology (Universidad de Talca), Communication (Universidad Austral de Chile), and Public Health (Universidad de Chile).
- Master’s in Psychology (Universidad de Chile), Epidemiology (Universidad de los Andes), Communication (Universidad Austral de Chile), Education (Universidad Austral de Chile), and Neuroscience (Universidad de Chile).
- Bachelor degrees in Psychology (Universidad Austral de Chile), Medicine (Universidad de Chile y Universidad de los Andes) and Journalism (Universidad de Chile).

More than half of its students are women, with gender parity. However, the center has no specific policy to ensure gender parity.

In addition, several research assistants have worked at Imhay alongside one of the principal investigators, primarily young people working on mental health issues. They collaborate in research projects by conducting literature reviews, collecting data, and supporting the writing of manuscripts for publication in scientific journals, among other activities. These assistants are part of the projects carried out by the researchers and, like the students, are invited to participate in the activities organized by the Nucleus, such as scientific meetings and outreach activities.

b) Achievements and results

Between the end of 2021 and 2024, 56 students participated in Imhay (information on students by tutor is in Annex 5). There were 26 undergraduate students, 14 master students, and 16 doctoral students. In total, there were 33 female and 23 male students. Regarding research lines, 26 students were part of the “Universal and targeted prevention”, 14 of the “Awareness and promotion”, 11 of the “Detection and early intervention”, and 4 of the “Individual, relational, community, and societal aspects”. Thirty students completed their studies, and 17 theses were completed (Table 4.1).

Table 4.1. Thesis completed by Imhay’s students.

Year	Student	Grade	Tutor	Thesis
2022	Daniela Solo, Paula Antiñirre, Diego Bórquez	Undergraduate	Álvaro Langer	Non-suicidal self-injury: sexual and gender diversities, adverse childhood experiences, and experiential avoidance as risk factors in first-year college students
2022	Marco Jiménez	Undergraduate	Lionel Brossi	#Vamosjuntxs: digital campaign for suicide prevention among young people

2022	Gabriela León	Master	Vania Martínez	Stigma of mental illness as a barrier to seeking professional help from the perspective of young college students at suicidal risk
2022	Fernando Parada	Doctoral	Vania Martínez	Pilot randomized controlled trial of an Ecological Momentary Assessment (EMA) baseline screening application for therapists treating youths with depression
2023	Mariel Labra	Master	Pablo Gaspar	Detection and attributions of symptoms of at-risk mental states by first-degree relatives
2023	Leny Loncomilla	Master	Pablo Gaspar	Association between mood state and visual attention during an ambiguous facial emotion recognition task
2023	Valeria Brito	Master	Vania Martínez	Narratives of distress of college students around their non-suicidal self-injury
2023	Rudy Fuentealba, Scarleth Muñoz, Sandra Herrera	Undergraduate	Álvaro Langer	Effect of mindfulness-based interventions on the development of social-emotional learning-related competencies in adolescent students: a systematic review
2023	Jonathan Salazar, Jireh Ceballos	Undergraduate	Álvaro Langer	Effect of mindfulness-based interventions on the development of competencies related to social-emotional learning in adolescent students: a systematic review
2023	Diego Olivos, Lani Morales	Undergraduate	Carolina Iturra	Addressing social-emotional competencies in initial teacher training: a systematic review of curricular organization
2023	Daniel Ramírez, Octavio Fuentes	Undergraduate	Carolina Iturra	Social-emotional skills in Chile: a systematic review of interventions and programs implemented in the educational context, in view of the national curriculum
2023	Daniela Faúndez, María José Lobos	Undergraduate	Carolina Iturra	Social-emotional competencies in educational contexts considering implementation science: a systematic review
2024	Marcelo Crockett	Doctoral	Vania Martínez	Mental health inequities by sexual orientation and gender identity, associated individual factors, and barriers to help-seeking among college students in higher education
2024	Luciana Sepúlveda	Master	Pablo Gaspar	Gamma-band spectral power and its relationship to coherent motion perception in people at high risk for psychosis
2024	Marcela Cárcamo	Doctoral	Jorge Gaete	Classes of bullying behavior in Chilean preadolescents
2024	Francisca Catipillán, Micaela Ruiz, Priscila Rojas	Undergraduate	Álvaro Langer	Evaluation of the applicability of an intervention based on mindfulness in the

				mental health of teachers of public schools in Valdivia
2024	Valerie Walker	Master	Vania Martínez	Socioeconomic factors associated with major and subthreshold depressive episode in first-generation college students

Three doctoral students did internships at foreign universities (Annex 5.2). Daniela Lira did an internship at the University of Heidelberg (Germany), Belén Vargas at the University of Melbourne (Australia), and Marcela Cárcamo at Griffith University (Australia). These internships were intended to contribute to their doctoral theses. Two external internships were carried out in Imhay. Doctoral student Carla Elizalde from the University of Navarra (Spain) worked with principal researcher Jorge Gaete. In her internship, Carla collected data on mental health stigma among students, part of her doctoral thesis.

Researcher Michael Meizner from the University of Illinois Chicago worked on a scientific article about attention deficit hyperactivity disorder and its relationship with suicidal ideation and depression in university students. The data came from the study of mental health in university students in Chile, which is part of the WMH-ICS international network.

Students are encouraged to participate in scientific publications and events with Imhay researchers. During these years, 14 students participated in 25 publications with principal researchers, 12 of whom were ISI/WoS, 4 Scopus, 1 SciELO, 3 book chapters, and 5 publications indexed in other repositories. In addition, the thesis of Imhay students and former students were published in scientific journals (publications 21, 31, 34, 49, and 50 in Annex 3.1.1 and publications 3 and 6 in Annex 3.5.1). Regarding participation in presentations at congresses, 17 students participated in 31 presentations at congresses (18 national and 13 international events).

Three students received awards for participating in national and international conferences and presented results from their thesis. First, Luciana Sepúlveda and Leny Loncomilla, master's degree students in neuroscience, were awarded first place for their poster in the IV International Conference: Clinical and Therapeutic Challenges in Psychosis. The title of their poster was "Thesis proposal: correlation between gamma-band spectral power and coherent motion perception in a group at high clinical risk of psychosis". Second, PhD student in public health Marcelo Crockett was awarded as one of the best student presenters at the 8th International Conference on Public Health 2022. The title of his oral presentation was "Barriers and facilitators of mental health help-seeking among LGBT+ college students".

Two students (Marcelo Crockett and Mariel Labra) participated in Nestle's communication campaign "Despierta un Cambio" [Awaken a Change]. This outreach activity included a communication campaign through social media and an open conversation with Chilean influencers. In addition, four Imhay students awarded university funding to design and implement workshops on affirmative health care skills for working with LGBT+ youth. During 2023 and 2024, three workshops were carried out with undergraduate students. Marcelo had the opportunity to present the workshop facilitators' manual in an activity organized by the Ministry of Health to primary health professionals.

c) Destination of Graduate Students

At the end of this report, doctoral student Marcela Cárcamo is working as an associate professor at the Universidad de los Andes; Fernando Parada is working as a researcher in an international software company; and Marcelo Crockett is working full-time as a young researcher at Imhay. Two master's graduates (Mariel Labra and Valeria Brito) work as university lecturers and clinical psychologists. Undergraduate student Jonathan Salazar continued working with Álvaro Langer on a research project and started his doctoral studies in psychology; Rosario Valdebenito is pursuing a medical specialty in child and adolescent psychiatry; José Miguel Valdés in neurology; Ignacio Lillo in adult psychiatry and now is working with Vania Martínez as a tutor for his final degree project; and Marco Jiménez did a Diploma in Communication and is now working part-time with Imhay in outreach and communication activities.

Most undergraduate and master's students work professionally in different clinical and educational settings.

4. Networking and other collaborative work

a) Networking

Imhay participated in two national and four international formal collaborative networks during 2022-2024. Each of these collaborative networks is described below and in Annex 6.1.

1. **High-Risk Mental State Network.** This national network focuses on the promotion of adolescent and youth mental health from the perspective of healthy neurodevelopment and the social, psychological, and clinical determinants of mental health. Its research agenda covers the emergence of temporary and persistent symptoms that, if undetected and untreated, lead to the development of chronic psychiatric illnesses in adulthood. The following institutions participate in this network: Clinical Hospital of Universidad de Chile, Universidad de Talca, Universidad Austral de Chile, Hospital Base de Valdivia, Hospital Base de Osorno, Hospital de Temuco, and Hospital de Los Ángeles. In this period, the network held several internal virtual meetings, meetings open to the public, and two conferences: the “IV International Conference: Clinical and Therapeutic Challenges in Psychosis” and the “I Conference on Prevention and Early Intervention in Psychosis” in which national and international researchers presented. Also, two working groups about at-risk mental states were formed in two Chilean professional organizations, the Society of Child and Adolescent Psychiatry and Neurology of Chile (SOPNIA) and the Society of Neurology, Psychiatry and Neurosurgery of Chile (SONEPSYN).
2. **World Mental Health International College Student Initiative (WMH-ICS).** This is an international collaboration led by the World Health Organization (WHO) that is conducting a multicenter longitudinal study to assess the mental health of college students. Universities in 18 countries are participating in the study. Imhay formally joined this network in 2019. Since 2020, Imhay has implemented this survey at the Universidad de Chile and, starting in 2021, at the four host institutions and the Universidad de O'Higgins. The survey assesses various mental health and wellbeing dimensions among Chilean university students. Among the prestigious institutions in the network are Harvard University, Columbia University, Vrije Universiteit Amsterdam, and the Catholic University of Leuven. Six students worked with data or participants recruited through this project, as well as a postdoctoral researcher. Articles 21, 43, 49, and 50 from Annex 3.1.1 and Article 3 from Annex 3.2.1 were part of this network. The network holds an annual meeting in Boston, Massachusetts (United States of America), in which different Imhay researchers have participated. Researchers Vania Martínez, Marta Silva, Álvaro Langer, and Jimena Carrasco are working on an international qualitative study about barriers to help-seeking.
3. **Conectados al Sur [Southern Connected].** This is a Latin American version of the global network Digitally Connected and a multisectoral network (academia, NGOs, private sector, government, political actors, and civil society) born from the joint effort of the Berkman Klein Center for Internet and Society at Harvard University and UNICEF focused on the opportunities and challenges that children and young people face in their relationship with the Internet and emerging

technologies in Latin America and the world. In 2023, the network applied for a research fund.

4. **International Mindfulness Network.** This interdisciplinary network brings together institutions from three continents and six countries around resilience and mindfulness research. The network focuses on improving adolescent and youth mental health from a perspective based on individual differences, strengths, and resources. Specifically, it combines diverse research perspectives by connecting mindfulness with prosocial behaviors and positive social environments to enhance resilience. During this period, four articles were published (articles 13, 24, 32, and 34 from Annex 3.1.1). Also, Imhay researcher Álvaro Langer did an academic visit to Universidad de Almería and Zurich Applied Science University; in the latter, Dr. Langer did a class about “Mindfulness and Compassion Research”.
5. **Network for the Development of Digital Mental Health.** Launched in 2018, this network conducts interdisciplinary research for the implementation of technological solutions in the prevention, detection, and treatment of mental disorders. Researchers from Imhay, the Clinical Hospital, the Faculty of Medicine, and the Faculty of Physics and Mathematical Sciences (Universidad de Chile), the Psychoanalysis Department (Universidad de Antioquia, Colombia), the Center for Psychotherapy Research (University of Heidelberg, Germany) and Psychology Faculty (Universidad CES, Colombia) conduct basic and applied research on the use of digital technology and data science to address mental health problems. In this period, four book chapters were published (publications 1, 2, 3, and 13 of Annex 3.4.1) related to digital mental health. Student Daniela Lira participated in a round table about digital technologies in interventions at the IV Congress of Digital Mental Health. Two online book launches were held. At the end of 2022, Imhay’s researchers Graciela Rojas, Álvaro Jiménez, Álvaro Langer, Vania Martínez, and Ricardo Araya, with researchers from other universities, were awarded a grant (N° FOVI220026) to promote international linkage for research institutions that will help to strengthen the network. Two seminars were held that were funded by the grant, one in Temuco and the other in Santiago, with the participation of Imhay researchers Graciela Rojas, Ricardo Araya, Álvaro Jiménez, and Álvaro Langer. In addition, Daniela Lira did a research stay and an internship at the University of Heidelberg that resulted from this network.
6. **Violence Studies Network.** This network is an interdisciplinary articulation of specialists and research centers who dedicate their efforts to studying different types of violence. The network aims to transfer knowledge to institutions, groups, and social actors, seeking to influence them. This network started in October 2019 and arose in response to the need to think about and research violence after the social movement and mass strikes in Chile, in which young people were protagonists. Different institutions participate in this network, such as Imhay, Paz Ciudadana, Fundación Chile XXI, CIIR, Universidad Academia de Humanismo Cristiano, Millennium Nucleus Authority and Asymmetries of Power (NUMAAP), Instituto de Sociología PUC, and the Faculty of Psychology of Universidad Diego Portales. In March 2022, the network ceased its operations.

b) Other collaborative activities

During 2022-2024, Imhay researchers participated in other collaborative networks, one national and two international (Annex 6.2). Imhay collaborated with the Society of Child and Adolescent Psychiatry and Neurology of Chile in the organization and dissemination of its annual congress (young researcher Francesca Borguero in 2022) and as part of the scientific committee (principal researcher Pablo Gaspar and doctoral student Juan Pablo del Río in 2024). The center also collaborated with disseminating the International Conference on Public Health (ICOPH) in 2022 and 2023; in 2024, the director of Imhay, Vania Martínez, participated in the scientific committee. Also, in 2024, Imhay's director participated in the International Association for Suicide Prevention (IASP) - Pan-American Conference as a member of its scientific committee.

5. Outreach and connections with public and private sectors

a) Outreach

During its three years of execution, the Imhay Millennium Nucleus has consolidated its position as a reference in the field of youth mental health, developing a wide and varied range of scientific dissemination activities. These actions, aligned with the objectives and scientific areas of the center, have allowed the transfer of knowledge and research results to a diverse public, including young people, health professionals, educators, families and society in general, contributing to the democratization of knowledge on adolescent and youth mental health.

Imhay has a communications team that uses different formats and platforms to disseminate content, promote its activities and establish connections with the public and institutions interested in the topics addressed by the research team. Its [website](#) contains a [section in English in](#) order to offer specific information to an English-speaking audience interested in learning about the work of the Nucleus. Along with this and thanks to its permanent activity in social networks, Imhay has managed to consolidate an important digital presence with more than 13,000 followers on [Facebook](#), [Twitter](#), [Instagram](#) and [YouTube](#).

Among the contents disseminated, scientific publications prepared by the members of the Nucleus stand out, which are shared on social networks in an understandable and accessible way for its followers. Also, Imhay elaborated a monthly digital newsletter where the most important events and news generated by its researchers were made known. This information was distributed team members, professionals in the area, collaborating institutions, decision-makers and the general public. The opening rate of the newsletter was 51.8%, a high figure if we consider that the average opening rate of newsletters and e-mail campaigns is 21.33%, according to Mailchimp, a platform for sending mass e-mails.

Imhay's outreach activities have allowed for effective communication of the advances and results of research, contributing to raising awareness of crucial issues for the well-being of young people. During its 3 years, Imhay organized 30 outreach events and its members participated in 195 scientific outreach activities, reaching more 35 thousand attendees with its contents and research. It is worth mentioning the participation of Imhay researchers in the main and most massive scientific outreach events in the country: [Puerto de Ideas Festival](#), [Congreso Futuro](#), [Protagonistas 2030](#) and [Congreso Futuro Jóvenes](#).

Among the dissemination activities, the communication campaign ["Awaken a change"](#) was carried out in conjunction with the multinational company Nestlé through its product Nescafé and the youth radio station Los 40. This initiative sought to promote conversation among young people on issues relevant to this group, highlighting the participation of two graduate students from Imhay, who talked about anxiety and sexual diversity.

As a way of extending its collaboration across borders, Imhay, with the support of the [OLA study](#) led by Queen Mary University of London and at [People's Palace Project](#), organized the ["Youth Building Wellbeing"](#) conversation. The event brought together young people to discuss the barriers, stigmas and needs in the youth community to address their daily emotional wellbeing challenges.

As an initial experience and with the collaboration of the Mirador Interactive Museum, one of the main centers dedicated to the dissemination of science, Imhay developed the [workshop "Urban nature and wellbeing: Connect your senses"](#), which aimed to create a space for young people to recognize and experience urban nature in order to promote reflection and the link with biodiversity as a key element for individual, collective and ecosystemic wellbeing. Four schools from the Metropolitan Region participated, most of them with a high vulnerability index. The evaluation indicated that students from all schools expressed high satisfaction with the workshop, both in terms of connection with nature and in increasing their knowledge of the benefits of urban nature for mental health. The activity was widely recommended, suggesting that it had a positive and well-received impact among participants.

Among the scientific dissemination products generated by Imhay, the following stand out: the [online course: "Addressing suicide risk in adolescents and young people"](#), available through the Coursera platform, aimed at the Latin American public that is in close contact with adolescents and young people. Its objective is to provide tools, develop skills and implement strategies for a timely and appropriate approach to suicide risk in this population. As of the date of this report, there are 4,326 people registered in the course, who come from different countries. Among the top 10 are: Chile, Mexico, Colombia, Spain, Peru, Ecuador, Argentina, Uruguay, Costa Rica and Venezuela.

Also noteworthy is the development of the free practical guide for adolescents and young people ["Connect your senses with nature"](#), available in digital and printed format, which contains exercises that allow them to connect with nature through breathing exercises and activities to rediscover the environment, making use of all the senses.

A group of Imhay researchers launched the second updated version of the [Psychoeducational Guide to Understanding High Risk Mental States](#), aimed at patients and their families, in order to contribute to psychoeducation and to destigmatize severe mental illness. And a group of doctoral students from Imhay edited the [Workshop Manual: "Affirmative Skills for the Health Care of LGBTQIA+ Youth"](#), aimed at undergraduate students of health and related careers, with the purpose of raising awareness about the health-related issues faced by LGBTQIA+ people, along with providing knowledge about key concepts and the affirmative approach to health care for LGBTQIA+ youth. In addition, Imhay developed the guide ["How to talk about suicide safely"](#), with the aim of providing guidance on how to talk about suicide in an empathetic, respectful and non-judgmental way.

In partnership with the National Youth Institute (INJUV), Imhay continued working on the series of psycho-educational videos ["Let's talk about mental health"](#), where it produced the psycho-educational capsule ["Let's talk about Eating Disorders"](#), which was disseminated by both institutions through their various communication platforms.

Imhay has been recurrently consulted by regional, national and international media to provide expertise on issues related to youth mental health. This media presence has increased the visibility of researchers in all categories (principal, adjunct, junior, senior and graduate) and has allowed research results to reach a much wider audience. In its 3 years of operation, Imhay achieved 345 appearances in written, television, radio and digital media.

In TV, the frequent participation of researchers of the Nucleus in [Sana Mente](#), a program specialized in mental health broadcast by CNN Chile, stands out. In the written press, the article that publicizes the urban nature guide created by Imhay in the newspaper [El Mercurio](#), one of the main media in the country, stands out. In other written media, Imhay researchers talked about [eco-anxiety](#), [analyzed mental health in Chile](#) and referred to the [emotional impact that social networks can have on youth](#). In radio, Imhay launched the program ["Sintoniza tu salud mental" \(Tune in to your mental health\)](#), a conversation space broadcast on radio Universidad de Chile, which has approximately 140,000 listeners. At the international level, the participation of Imhay researchers stands out, who were consulted on [mental health in Chile](#), [anxiety and depression](#), and [addiction](#).

In addition, Imhay participated in different events and mass scientific fairs, held in schools and universities, where information was given to adolescents and young people about the importance of taking care of mental health and some strategies to prevent emotional problems.

b) Connections with public and private sectors

One of Imhay's hallmarks is its strong collaboration with other sectors of society, in pursuit of improving the mental health of adolescents and youth. During 2022-2024, Imhay researchers participated in 54 activities and connections with other public institutions, private institutions, and Non-Governmental Organizations. The details of the connections are in Annex 8.

One of the most important collaborations is with the public sector (32 connections in total), given that the center's objective is to collaborate in the formulation and strengthening of public policies related to adolescent and youth mental health. These activities include:

- A formal collaboration agreement with the National Youth Institute of Chile (INJUV) of the Ministry of Social Development and Family, in which Imhay researchers have participated as advisors for INJUV studies (National Youth Survey and Climate Change), working groups, a training activity, and recently in the development of a study for the detection of suicide risk through artificial intelligence using chats of young people who participate in Let's Talk About Everything online chat.
- Formal collaboration agreements with 3 municipalities for the development of activities.
- Participation in consultancies and roundtables about education (Chamber of Deputies and National Congress), future health (Chamber of Senators), misinformation (Ministry of Science, Technology, Knowledge and Innovation, and Ministry Secretary General of Government), mental health prevention pilot program (Ministry of Health), higher education mental health (Ministry of Health and Ministry of Education), intersex health (Ministry of Health), suicide behavior (Regional Ministry Secretariats), national plan for suicide prevention (Ministry of Health), digital technologies (Ministry of Education), and artificial intelligence (Chamber of Senators).
- Nine training activities about suicide prevention (National Board of School Aid and Scholarships, Better Childhood Services, National Service for the Prevention and Rehabilitation of Drug and Alcohol Consumption, INJUV), mental health problems

- (Ministry of Health, Municipality of Peñalolén), drug consumption in adolescence (Municipality of Las Condes), connection with nature (Interactive Museum Mirador) and right and duties of users in mental health services (Health Service of Valdivia).
- Participation in technical guides about road safety education (Ministry of Health), schizophrenia (Ministry of Health) and higher education mental health (Ministry of Health and Ministry of Education).

Imhay researchers participated in six activities with international institutions: (1) an advisory committee related to adolescent mental health and the use of technology, led by the Inter-American Development Bank (United States of America); (2) an advisory council about telemedicine for mental health treatment in the State Health Services Administration of Uruguay, organized by representatives of the Pan American Health Organization and the World Health Organization in Uruguay; (3) an advisory council about trust and security issues throughout the Spanish-speaking region with the Tik Tok App (China); (4) an evaluation report about scales to assess psychotic symptoms for Wellcome Trust (United Kingdom); (5) to support the dissemination of OLA study (mention below, United Kingdom); and (6) a Delphi study about the challenges and opportunities for informative clinical trials in digital mental health (United Kingdom).

In the educational sector, Imhay researchers participated in six activities with educational institutions. Two of these activities were workshops. One for teachers on school violence prevention and the second for students on mental health leadership. In addition, principal researcher Marta Silva participated as a scientific consultant to a group of schoolchildren who carried out a research project and participated as a jury member in a school science and technology contest. Also, young researcher Ana Barrera presented to the Council of Chilean University Rectors about mental health in university students.

During this period, four collaboration agreements were formalized with NGOs. Two training activities on suicide risk assessment were carried out with the Todo Mejora (It Gets Better) Foundation for its volunteers in charge of a help chat and with the professionals of the Fundación para La Confianza. A scientific publication was developed with the Wild Conservation Society Foundation, in which a doctoral student participated (publication 5 in Annex 3.5.1), and psychoeducational material for social media.

Imhay also generated links with youth organizations, such as Manitos de Confianza, Local Conference of Youth Chile, and supported the dissemination of OLA Study in an activity on which young people were invited to share their opinions about youth mental health. Also, Imhay co-organized a radio program with Radio University of Chile on which mental health issues were discussed and participated in a communicational campaign and talk organized by Nescafé Company. On the latter activity students Mariel Labra and Marcelo Crockett participated as young experts on anxiety and sexual and gender diverse issues.

c) Other achievements:

From different contexts, such as education and healthcare, they have requested to use Imhay's material, demonstrating the usefulness and transfer of knowledge in everyday life.

6. Administration and Financial Status

a) Administration

Imhay was organized in two different instances. First, Imhay's principal researchers met monthly to plan the various activities related to the functioning of the Nucleus. Some of its functions were to carry out the annual planning of the Nucleus, to review the inclusion of other researchers, and to review the distribution of economic resources. The director of Imhay led these meetings. Secondly, Imhay had an executive team responsible for coordinating and implementing different scientific, administrative, and dissemination activities. The team comprised the director of the Nucleus, the alternate director, the executive coordinator, the communications officer, the management coordinator, and an executive assistant. The executive team met weekly, and this team also participated in the monthly principal researcher's reunion. A secretary, an administration manager, and a finance manager supported administrative activities. Imhay's organizational chart is shown in Annex 9.3.

The Faculty of Medicine of the Universidad de Chile supported the infrastructure and administrative activities. Each host institution has offices for its researchers, equipment and internet access, meeting rooms, and other facilities. Between the end of 2021 and 2024, 16 administrative and technical staff supported Imhay's research and dissemination activities (Table 7.1).

Table 7.1. Number of assistants, technicians, and administrative staff that have worked in Imhay during 2023.

Category	Female	Male	Total
Assistant & Technicians	4	9	13
Administrative Staff	3	0	3
Total	7	9	16

b) Financial Status

Imhay's financial income is shown in Annex 9. The primary source of income during 2022 corresponded to the Millennium Science Initiative. Of the total funds from the Millennium Science Initiative, approximately \$16 million (Chilean pesos) corresponded to the funds awarded through the outreach fund competition. Imhay researchers financed their research activities through competitive funds for their research projects. These funds included Initiation Fondecyt, Regular Fondecyt, and funds from each university. The principal researchers of each project administered these research funds.

The economic resources were mainly used to pay salaries for researchers, technical, administrative, and communication staff and to support research activities, such as the license of Qualtrics software for conducting surveys, registration to congresses for our researchers and students, translation of scientific articles, and dissemination activities. Also, funds were allocated to in-person Imhay's annual meetings in Valdivia in 2023 and Santiago in 2024. More information about the expense structure is in Annex 9.2.

7. Annexes

Annex 1. Researchers

1.1. Tabla resumen de investigadores del centro

Category of researcher	Amount	Average Age	Nationality		Gender Distribution		
			Chilean	Foreign	Male	Female	Not stated
Director	1	54.0	1	0	0	1	0
Alternate Director	1	45.0	1	0	1	0	0
Principal Researcher	8	48.9	8	0	3	5	0
Senior Researcher	2	69.5	2	0	1	1	0
Young Researcher	16	36.2	15	1	6	10	0
Postdoctoral	1	39.0	1	0	1	0	0
Adjunct Researchers	5	47.0	4	1	3	2	0
Total	34	43.6	32	2	15	19	0

1.2. Principal Researchers

Name	Research Line	Nationality	Gender	Date of birth dd/mm/yy	Profession	Academic Degree	Affiliation	Current Position	Relation with Center
Vania Martínez	Awareness and promotion	Chilean	F	14/01/70	Psychiatrist	D	Universidad de Chile	Full professor	P
Álvaro Langer	Universal and targeted prevention	Chilean	M	29/05/79	Psychologist	D	Universidad Austral de Chile	Associate professor	P
Daniel Núñez	Detection and early intervention	Chilean	M	30/10/67	Psychologist	D	Universidad de Talca	Associate professor	P
Jorge Gaete	Universal and targeted prevention	Chilean	M	14/11/73	Psychiatrist	D	Universidad de los Andes	Full professor	P

Pablo Gaspar	Detection and early intervention	Chilean	M	20/08/75	Psychiatrist	D	Universidad de Chile	Associate professor	P
Carolina Iturra	Universal and targeted prevention	Chilean	F	16/03/73	Psychologist	D	Universidad de Talca	Associate professor	P
Yanira Zúñiga	Individual, relational, community, and societal aspect	Chilean	F	05/07/72	Lawyer	D	Universidad Austral de Chile	Full Professor	P
Marta Silva	Individual, relational, community, and societal aspect	Chilean	F	19/08/81	Anthropologist	D	Universidad Austral de Chile	Assistant professor	P
Alicia Núñez	Individual, relational, community, and societal aspect	Chilean	F	12/08/80	Engineer	D	Universidad de Chile	Associate professor	P
María Isabel Pavez	Awareness and promotion	Chilean	F	21/01/80	Journalist	D	Universidad de los Andes	Associate professor	P

1.3. Senior Researchers

Name	Research Line	Nationality	Gender	Date of birth dd/mm/yy	Profession	Academic Degree	Affiliation	Current Position	Relation with Center
María Graciela Rojas	Universal and targeted prevention	Chilean	F	24/09/53	Psychiatrist	D	Universidad de Chile	Full Professor	P
Ricardo Araya	Universal and targeted prevention	Chilean	M	03/09/56	Psychiatrist	D	King's College London	Director of the Centre for Global Mental Health	P

NOMENCLATURE:**[Gender]**

[M] Male [F] Female

[Academic Degree]

[U] Undergraduate [M] Master [D] Doctoral

[Relation with Center]

[F] Full time [P] Part time

Annex 2. Research Lines

Nº	Research Line	Research Line Objectives	Description of Research Line	Researchers	Research Disciplines	Starting Date [dd/mm/yy]	Ending Date [dd/mm/yy]	Status
1	Individual, relational, community, and societal aspects	To analyze the interrelationship of protective and risk factors that affect mental health at the individual, relational, community and societal levels, as well as the social consequences of health problems.	This line of research aims to deepen knowledge about the multiple factors that are related to mental health problems in youth, as well as the consequences that these mental health problems may have for young people and their environment. The studies developed in this line contribute to making visible the influence of the social determinants of mental health, the prevalence of mental disorders in different groups and the use of health services.	<ul style="list-style-type: none"> - Alicia Núñez - Marta Silva - Yanira Zúñiga - Jimena Carrasco - Paola Tapia - Scarlett Mac-Ginty - Marcelo Crockett 	<ul style="list-style-type: none"> - Experimental psychology - Other psychologies - Hygiene and public health (epidemiology) - Cultural and social anthropology - Sociology 	17-12-21	16-12-24	Ended
2	Awareness and promotion	Raise awareness and reduce stigmatization about mental health problems to promote timely consultation to mental health services and promote emotional wellbeing.	The research and activities developed in this line of research contribute to raising public awareness and reducing the stigma associated with mental health problems, with the aim of promoting help-seeking in mental health services and the emotional wellbeing of adolescents and young people.	<ul style="list-style-type: none"> - Vania Martínez - María Isabel Pavez - Lionel Brossi - Ana Barrera - Reiner Fuentes 	<ul style="list-style-type: none"> - Educational and cognitive psychology - Clinical psychology - Other psychologies - Journalism 	17-12-21	16-12-24	Ended
3	Universal and targeted prevention	To evaluate the efficacy, effectiveness and cost-effectiveness of interventions aimed at adolescents and young people with risk factors or who already present psychopathology, promoting participatory design and the	This line of research includes studies that evaluate preventive interventions for some mental health problems, alcohol and drug use and school violence. For this type of interventions, the use of participatory designs and	<ul style="list-style-type: none"> - Álvaro Langer - Jorge Gaete - Carolina Iturra 	<ul style="list-style-type: none"> - Clinical psychology - Educational and cognitive psychology - Hygiene and public health (epidemiology) 	17-12-21	16-12-24	Ended

		use of information and communications technologies.	information and communication technologies (ICTs) is promoted.	<ul style="list-style-type: none"> - María Graciela Rojas - Ricardo Araya - Álvaro Vergés - Nicolás Libuy - Pablo Martínez - Francesca Borghero - Susana Campos - Maryam Farhang - Álvaro Jiménez 				
4	Detection and early intervention	Develop or adapt and assess tools, strategies and interventions that allow better detection and early intervention of psychopathology	This line of research brings together research aimed at the development and adaptation of different tools that contribute to the detection of psychopathology, such as questionnaires to measure psychopathology, and the development and adaptation of early interventions for mental health problems in youth.	<ul style="list-style-type: none"> - Daniel Núñez - Pablo Gaspar - Alicia Figueroa - Rocío Mayol - María Belén Aburto - Rolando Castillo - José Luis Ulloa 	<ul style="list-style-type: none"> - Clinical psychology - Hygiene and public health (epidemiology) 	17-12-21	16-12-24	Ended

Annex 3. Publications (Total or partially financed by Milenio)**3.1. ISI/WoS Publications or Similar to ISI/WoS Standard****3.1.1. Principals Researchers**

N°	Year	Title	Quartile	Authors	DOI	Research lines	Number of Center's Principal Researchers	Number of Center's researchers from other categories	Number of students	Date of Publication
1	2022	Salud mental en estudiantes de educación superior en Chile: una revisión de alcance con meta-análisis	Q4	Pablo Martínez, Álvaro Jiménez-Molina, Scarlett Mac-Ginty, Vania Martínez, Graciela Rojas	10.4067/S0718-48082021000300405	Individual, relational, community, and societal aspects.	1	4	0	28-12-21
2	2022	The Unplugged program in Chile ("Yo Sé Lo Que Quiero") for substance use prevention among early adolescents: study protocol for a randomized controlled trial	Q4	Jorge Gaete, Saray Ramírez, Sofía Gana, Daniela Valenzuela, Ricardo Araya	10.1186/s13063-021-05904-3	Universal and targeted prevention.	1	3	0	25-01-22
3	2022	Preliminary evidence for internal structure, sensitivity, and specificity of a brief PTSD and complex PTSD measure in adolescents.	Q1	Susana Campos, Daniel Núñez, Patricia Bravo, Andrés Fresno, Miranda Olff	10.1037/cbs0000322	Detection and early intervention.	1	1	0	07-03-22
4	2022	Testing the effectiveness of a blended intervention to reduce suicidal ideation among school adolescents in Chile: A protocol for a cluster	Q1	Daniel Núñez, Jorge Gaete, Daniela Meza, Javiera Andaur, Jo Robinson	10.3390/ijerph19073947	Detection and early intervention.	2	0	0	26-03-22

		randomized controlled trial								
5	2022	Propiedades psicométricas de la escala Generalized Anxiety Disorder 7-Item (GAD-7) en una muestra comunitaria de adolescentes en Chile	Q4	<u>Marcelo A. Crockett</u> , Vania Martínez, Jorge L. Ordóñez-Carrasco	10.4067/S0034-98872022000400458	Detection and early intervention.	1	0	1	15-04-22
6	2022	Identifying self-report measures of emotion regulation and evaluating their psychometric properties: a protocol for a systematic review	Q2	Daniel Núñez, César Villacura-Herrera, Kevin Celedón, José Luis Ulloa, Nadia Ramos, Rosario Spencer, Andrés Fresno	10.1136/bmjopen-2021-056193	Universal and targeted prevention.	1	1	0	12-05-22
7	2022	Social and economic factors associated with subthreshold and major depressive episode in university students during the COVID-19 pandemic	Q1	Álvaro I. Langer, <u>Marcelo A. Crockett</u> , Mariori Bravo-Contreras, Carolina Carrillo-Naipayan, Matías Chaurá-Marió, Bárbara Gómez-Curumulla, Claudia Henríquez-Pacheco, Rodrigo C. Vergara, Jorge Santander, Zayra Antúnez, Tomas Baader	10.3389/fpubh.2022.893483	Individual, relational, community, and societal aspects.	1	0	1	18-05-22
8	2022	Mental health and related factors among undergraduate students during SARS-CoV-2 pandemic: a cross-sectional study	Q2	<u>José Miguel Valdés</u> , Francisco Javier Díaz, Pascale Marie Christiansen, Gabriel Arturo Lorca, Francisco Javier Solorza, Matías Alvear, Saray Ramírez,	10.3389/fpsy.2022.833263	Individual, relational, community, and societal aspects.	2	2	1	31-05-22

				Daniel Núñez, Ricardo Araya, Jorge Gaete						
9	2022	Automatic language analysis identifies and predicts schizophrenia in first-episode of psychosis	Q2	Alicia Figueroa-Barra, Daniel Del Águila, Mauricio Cerda, Pablo A. Gaspar, Lucas D. Terissi, Manuel Durán, Camila Valderrama	10.1038/s41537-022-00259-3	Detection and early intervention.	1	1	0	01-06-22
10	2022	Effectiveness of the KiVa Antibullying Program with and without the online game in Chile: a three-arm cluster randomized controlled trial	Q2	Daniela Valenzuela, Tiina Turunen, Sofía Gana, Cristian A. Rojas-Barahona, Ricardo Araya, Christina Salmivalli, Jorge Gaete	10.1007/s11121-022-01379-z	Universal and targeted prevention.	1	2	0	24-06-22
11	2022	A Latent Profile Analysis of psychotic experiences, non-psychotic symptoms, suicidal ideation and underlying mechanisms in a sample of adolescents from the general population	Q2	Álvaro I. Langer, Klaas Wardenaar, Johanna T. W. Wigman, José Luis Ulloa, Daniel Núñez	10.3389/fpsy.2022.926556	Detection and early intervention.	2	1	0	27-06-22
12	2022	The Social Competence Promotion Program among Young Adolescents (SCPP-YA) in Chile ("Mi Mejor Plan") for substance use prevention among early adolescents:	Q4	Jorge Gaete, Constanza Inzunza, Saray Ramírez, Daniela Valenzuela, Cristian Rojas, Ricardo Araya	10.1186/s13063-022-06472-w	Universal and targeted prevention.	1	2	0	30-06-22

		study protocol for a randomized controlled trial								
13	2022	The impact of baseline mindfulness scores on mindfulness-based intervention outcomes: toward personalized mental health interventions	Q1	Rodrigo C. Vergara, Constanza Baquedano, Enrique Lorca-Ponce, Christoph Steinebach, Álvaro I. Langer	10.3389/fpsyg.2022.934614	Universal and targeted prevention.	1	0	0	11-07-22
14	2022	Examining associations between symptoms of eating disorders and symptoms of anxiety, depression, suicidal ideation, and perceived family functioning in university students: a brief report	Q1	Camila Murga, Ruth Cabezas, Carolina Mora, Susana Campos, Daniel Núñez	10.1002/eat.23787	Detection and early intervention.	1	1	0	30-07-22
15	2022	State of mental health research of adolescents and youth in Chile: an ontological analysis	Q1	Vania Martínez, <u>Marcelo A. Crockett</u> , Ajay Chandra, Sarah Shabbir Suwasrawala, Arkaigud Ramaprasad, Alicia Núñez, Marcelo Gómez-Rojas	10.3390/ijerph19169889	Awareness and promotion.	2	0	1	11-08-22
16	2022	A mother's voice and a child's view: revisiting the constructed role of women in rural Chile	Q3	Isabel Pavez, Catalina Farías	10.1080/0966369X.2022.2118243	Individual, relational, community, and societal aspects.	1	0	0	07-09-22
17	2022	Evidence for validity, reliability and measurement invariance of the emotion regulation	Q2	César Villacura-Herrera, Jorge Gaete, Javiera Andaur, Daniela	10.1007/s12144-022-03833-1	Individual, relational, community,	2	0	0	02-11-22

		questionnaire for children and adolescents (ERQ-CA) in secondary students from Chile		Meza, Jo Ribinson, Daniel Núñez		and societal aspects.				
18	2022	Brief report: the association of adverse childhood experiences and suicide-related behaviors among 10th-grade secondary school students	Q2	Daniel Núñez, Jorge Gaete, Viviana Guajardo, Nicolás Libuy, Ana María Araneda, Lorena Contreras, Paula Donoso, Carlos Ibañez, Adrian P. Mundt	10.1080/13811118.2022.2134067	Individual, relational, community, and societal aspects.	2	1	0	04-11-22
19	2022	Psychotic experiences, emotion regulation, and suicidal ideation among Chilean adolescents in the general population	Q2	Heather M. Wastler, Daniel Núñez	10.3389/fpsy.2022.983250	Detection and early intervention.	1	0	0	16-11-22
20	2022	Space analysis of school violence in the educational setting of Peru, 2019	Q1	Wendy Arhuis-Inca, Miguel Ipanaqué-Zapata, Janina Bazalar-Palacios, Jorge Gaete	10.3390/ijerph192316044	Individual, relational, community, and societal aspects.	1	0	0	30-11-22
21	2022	Barriers and facilitators to mental health help-seeking and experiences with service use among LGBT+ university students in Chile	Q1	<u>Marcelo A. Crockett</u> , Vania Martínez, Patricio Caviedes	10.3390/ijerph192416520	Individual, relational, community, and societal aspects.	1	0	1	09-12-22
22	2022	Las anomalías precoces de la continuidad en el discurso constituyen biomarcadores	Q4	Alicia I. Figueroa-Barra, María-Elena León-Bustos, Pablo Gaspar-Ramos	10.15581/008.38.3.1016-49	Detection and early intervention.	1	1	0	13-12-22

		predictivos de psicosis								
23	2023	Building bridges through cultural adaptation: Examining the initial impact of a culturally adapted parent training intervention for the Chilean context	Q1	Rubén Parra-Cardona, Jaime Fuentes-Balderrama, Luz Cantizano Rioseco, Francisca Javiera Monreal Arcil, María Luisa Correa Molina, Daniela Martic Guazzini, Ana Ford Narváez, Alejandro Neira González, Marcelo Sánchez Ahumada, Alexander Chacón Sandoval, José Marín Montecinos, Jorge Gaete	10.1111/famp.12855	Universal and targeted prevention.	1	0	0	06-02-23
24	2023	Effects of a mindfulness and physical activity programme on anxiety, depression and stress levels in people with mental health problems in a prison: a controlled study	Q2	Jose Gallego, Adolfo J. Cangas, Israel Mañas, Jose M. Aguilar-Parra, Álvaro I. Langer, Noelia Navarro, Maria-Jesus Lorola	10.3390/healthcare11040555	Detection and early intervention.	1	0	0	13-02-23
25	2023	Mental health and religiosity: the role of experiential avoidance in the symptoms of depression, anxiety, and stress	Q4	Reiner Fuentes Ferrada, Leonardo D. Bacilagalupe, Jorge Ordóñez Carrasco, Melissa Munzenmayer, Miguel A. Navarro, María J. Escobar, Javiera Cárdenas, Álvaro I. Langer	https://www.ijpsy.com/volumen23/num1/629.html	Individual, relational, community, and societal aspects.	1	1	0	01-03-23
26	2023	Depresión, ansiedad	Q4	<u>Marcelo A. Crockett</u> , Vania Martínez	10.32641/andespediatr.v94i2.4376	Individual, relational,	1	0	1	01-03-23

		generalizada y riesgo de consumo problemático de sustancias en estudiantes secundarios				community, and societal aspects.				
27	2023	Life stories of graduate students in Chile and the United States: influences on becoming a scientist from childhood to adulthood	Q3	Marta A. Silva Fernández, Waleska Berrios, <u>Paulina Sanzana</u> , Andrew L. Sigerson	10.1080/09500693.2022.2161858	Individual, relational, community, and societal aspects.	1	0	1	04-04-23
28	2023	Validation of the Spanish version of the Pediatric Symptom Checklist (PSC) to identify and assess psychosocial problems among early adolescents in Chile	Q2	Saray Ramírez, Sofía Gana, María Inés Godoy, Daniela Valenzuela, Ricardo Araya, Jorge Gaete	10.1371/journal.pone.0283921	Detection and early intervention.	1	3	0	06-04-23
29	2023	Impact of mental health problems and social support on sleep quality: Follow-up before and during the first eight months of the COVID-19 pandemic in Chilean university students	Q3	Zayra Antúnez, Rodrigo C. Vergara, Álvaro I. Langer, Jorge Santander, Tomas Baader, Catalina Álamo, Mónica Arce, Bárbara Delgado, Karen Laurin, Catalina Moncada	10.6018/analesps.517321	Individual, relational, community, and societal aspects.	1	0	0	24-04-23
30	2023	Social contagion, violence, and suicide among adolescents	Q1	Vania Martínez, Álvaro Jiménez-Molina, Mónica M. Gerber	10.1097/YCO.0000000000000858	Individual, relational, community, and societal aspects.	1	1	0	01-05-23

31	2023	Implementation strategies and outcomes of school-based programs for adolescent suicide prevention: a scoping review protocol	Q2	<u>Belén Vargas</u> , Pablo Martínez, Scarlett Mac-Ginty, <u>Tamara Hoffmann</u> , Vania Martínez	10.1371/journal.pone.0284431	Universal and targeted prevention.	1	2	2	04-05-23
32	2023	Clinical resilience: toward a unified definition	Q3	Edwin Krogh, Epstein, Ronald, Álvaro I. Langer, Christoph Steinebach	10.1093/intqhc/mzad025	Awareness and promotion.	1	0	0	17-05-23
33	2023	Análisis de las percepciones de los menores chilenos sobre el contenido comercial en TikTok: "Me comí un anuncio"	Q3	Beatriz Feijoo, Isabel Pavez, Cristóbal Benavides	10.14198/MEDCOM.24250	Awareness and promotion.	1	0	0	01-07-23
34	2023	Forest bathing diminishes anxiety in undergraduate students: a pilot study in the Valdivian temperate rainforest	Q3	Álvaro I. Langer, Esteban Solano, Leonardo D. Bacigalupe, Betsabé Soto, Angie Asenjo, Ariel Cifuentes, Ibeth Navarrete, Rodrigo C. Vergara, Cristoph Steinebach	10.1080/13416979.2023.2232086	Universal and targeted prevention.	1	0	0	12-07-23
35	2023	Initial validation of the Multidimensional Adolescent Functioning Scale (MAFS) in Spanish-speaking students from Chilean secondary schools	Q2	Daniel Núñez, César Villacura-Herrera, Jorge Gaete, Daniela Meza, Javiera Andaur, Johanna T. W. Wigman, Jo Robinson	10.1186/s12955-023-02163-5	Detection and early intervention.	2	0	0	24-07-23
36	2023	Development of the PSYCHS: Positive SYmptoms and Diagnostic Criteria	Q3	Scott W. Woods et al. (Pablo A. Gaspar)	10.1111/eip.13457	Detection and early intervention.	1	0	0	28-08-23

		for the CAARMS Harmonized with the SIPS								
37	2023	Parental practices and their association with alcohol and cannabis use among adolescents in Chile	Q1	Nicolás Libuy, Viviana Guajardo, Carlos Ibáñez, Ana María Araneda, Lorena Contreras, Paula Donoso, Jorge Gaete, Adrian P. Mundt	10.3389/fpsyg.2023.1209584	Individual, relational, community, and societal aspects.	1	1	0	11-09-23
38	2023	Initial validation of the International Trauma Questionnaire (ITQ) in a sample of Chilean adults	Q1	Andrés Fresno, Nadia Ramos Alvarado, Daniel Núñez, José Luis Ulloa, Jessica Arriagada, Marylene Cloitre, Jonathan I. Bisson, Neil P. Roberts, Mark Shevlin, Thanos Karatzias	10.1080/20008066.2023.2263313	Detection and early intervention.	1	1	0	23-10-23
39	2023	Psychometric assessment of the Suicidal Ideation Questionnaire Junior: a two-study validation in Spanish-speaking adolescents	Q2	Daniel Núñez, César Villacura-Herrera, Jorge Gaete, Daniela Meza, Javiera Andaur, Jo Robinson	10.1007/s12144-023-05422-2	Detection and early intervention.	2	0	0	24-11-23
40	2023	The Coronavirus Anxiety Scale: cross-national measurement invariance and convergent validity evidence	Q2	Veljko Jovanović et al. (Jorge Gaete)	10.1037/pas0001270	Detection and early intervention.	1	0	0	27-11-23
41	2024	Disparidades en el uso de servicios de salud mental de	Q4	Marcia Salinas-Contreras, <u>Belén Vargas</u> , Marcelo A.	10.32641/andespediatr.v94i6.4637	Individual, relational, community,	1	1	1	29-12-23

		adolescentes en Chile		Crockett, Vania Martínez		and societal aspects.				
42	2024	Montreal Cognitive Assessment (MoCA) as a screening tool for cognitive impairment in early stages of psychosis	Q2	Sebastian Corral, Pablo A. Gaspar, Rolando I. Castillo-Passi, Rocío Mayol Troncoso, Adrian P. Mundt, Yuriy Ignatyev, Rodrigo R. Nieto, Alicia Figueroa-Muñoz	10.1016/j.scog.2024.100302	Detection and early intervention.	1	2	0	29-01-24
43	2024	Sociodemographic correlates of mental health treatment seeking among college students: a systematic review and meta-analysis	Q1	Julia Pei, Yagmur Amanvermez, Daniel Vigo, Joseph Puyat, Ronald C. Kessler, Philippe Mortier, Ronny Bruffaerts, Osiris Rankin, Sook Ning Chua, Vania Martínez, Charlene Rapsey, Liviu A. Fodor, Oana A. David, Claudia Garcia, Pim Cuijpers	10.1176/appi.ps.20230414	Individual, relational, community, and societal aspects.	1	0	0	31-01-24
44	2024	Psychometric evidence of the Acceptance and Action Questionnaire-II (AAQ-II): an item response theory analysis in university students from Chile	Q1	Álvaro I. Langer, Fernando P. Ponce, Jorge L. Ordóñez-Carrasco, Reiner Fuentes-Ferrada, Scarlett Mac-Ginty, Jorge Gaete, Daniel Núñez	10.1186/s40359-024-01608-w	Detection and early intervention.	3	2	0	01-03-24
45	2024	Psychotic symptoms with and without a primary psychotic disorder in children requiring inpatient mental health admission	Q1	Nefeli Anagnostopoulou, Efsthios Papachristou, Hayley Galitzer, Anca Alba, Jorge Gaete, Danaï Dima,	10.1192/j.eurpsy.2024.23	Detection and early intervention.	1	0	0	05-03-24

				Maria Rogdaki, Gonzalo Salazar de Pablo, Marinos Kyriakopoulos						
46	2024	Accelerating Medicines Partnership® Schizophrenia (AMP® SCZ): Rationale and study design of the largest global prospective cohort study of clinical high risk for psychosis	Q1	Cassandra M. Wannan et al (Pablo A. Gaspar, Rolando I. Castillo-Passi, Rocío Mayol- Troncoso, <u>Gabriel Turra-Fariña</u>)	10.1093/schbul/sbae011	Detection and early intervention.	1	2	1	07-03-24
47	2024	First international consensus statement on sports psychiatry	Q1	Malte Christian Claussen, Alan Currie, Eugene Koh Boon Yau, Masaki Nishida, Vania Martínez, James Burger, Shane Creado, Alexander Schorb, Roberto Fernandes Nicola, Amrit Pattojoshi, Ranjit Menon, Ira Glick, Jim Whitehead, Carla Edwards, David Baron	10.1111/sms.14627	Awareness and promotion.	1	0	0	12-04-24
48	2024	Internet-based self- administered intervention to reduce anxiety and depression symptomatology and improve well- being in 7 countries: protocol of a randomized control trial	Q2	Alejandro Dominguez- Rodriguez (Álvaro I. Langer)	10.3389/fpsyg.2024.1279847	Universal and targeted prevention.	1	0	0	07-05-24

49	2024	Mental health service use and barriers to help-seeking among LGBTQ+ first-year college students in Chile	Q1	Marcelo A. Crockett, Vania Martínez, Scarlett Mac-Ginty, Álvaro I. Langer, Jorge Gaete, Daniel Núñez, Irene Léniz	10.1080/19361653.2024.2347962	Individual, relational, community, and societal aspects.	4	2	0	15-05-24
50	2024	Differences in mental health problems in LGBTQ+ first year college students in Chile during the pandemic	Q1	Marcelo A. Crockett, Vania Martínez, Scarlett Mac-Ginty, Álvaro I. Langer, Jorge Gaete, Daniel Núñez	10.1007/s00127-024-02683-5	Individual, relational, community, and societal aspects.	4	2	0	31-05-24
51	2024	Internal consistency and temporal stability of the Community Assessment of Psychic Experiences (CAPE): A reliability generalization meta-analysis	Q1	César Villacura-Herrera, Jesús Pérez, Peter B. Jones, Daniel Núñez	10.1016/j.psychres.2024.115988	Detection and early intervention.	1	0	0	07-06-24
52	2024	Effect of prior beliefs and cognitive deficits on learning in first-episode schizophrenia patients	Q2	Daniel Núñez, Javiera Rodríguez-Delgado, Ramón D. Castillo, José Yupanqui, Heidi Kloos	10.1016/j.scog.2024.100318	Detection and early intervention.	1	0	0	17-06-24
53	2024	Teachers' situated knowledge: Addressing digital exclusion in rural contexts	Q2	Isabel Pavez, Angela Novoa-Echaurren, Antonio Salinas-Layana	10.1344/der.2024.45.171-178	Individual, relational, community, and societal aspects.	1	0	0	01-07-24
54	2024	Lifetime prevalence of psychotic-like experiences and associated factors in Chile	Q1	Gabriel A. González-Medina, Sebastián A. Corral, Rolando I. Castillo-Passi, Matías Irarrazaval,	10.1007/s00127-024-02741-y	Individual, relational, community, and societal aspects.	1	1	0	27-07-24

				Alejandro J. Maturana-Hurtado, Pablo A. Gaspar						
55	2024	Acceptability, feasibility and fidelity of the culturally adapted version of Unplugged (“Yo Se Lo Que Quiero”), a substance use preventive program among adolescents in Chile: a pilot randomized controlled study	Q1	<u>Gabriel Salgado</u> , Jorge Gaete, Sofía Gana, Daniela Valenzuela, Ricardo Araya	10.1186/s12889-024-19499-2	Universal and targeted prevention.	1	1	1	29-07-24
56	2024	Characterization of psychopathology in Latin American adolescents using a web-based screening tool: cross-sectional study	Q3	Susana Campos, Daniel Núñez, J. Carola Pérez, Jo Robinson	10.2196/57038	Detection and early intervention.	1	1	0	08-08-24
57	2024	Fixational eye movements and their associated evoked potentials during natural vision are altered in schizophrenia	Q2	Rocío Mayol-Troncoso, Pablo A. Gaspar, Roberto Verdugo, Juan J. Mariman, Pedro E. Maldonado	10.1016/j.scog.2024.100324	Detection and early intervention.	1	1	0	15-08-24
58	2024	Imitative inhibitory control is associated with psychotic experiences in a sample from the general population	Q2	José Luis Ulloa, Daniel E. Núñez, Pablo A. Gaspar, Marcel Brass	10.3389/fpsyt.2024.1470030	Detection and early intervention.	2	1	0	10-11-24

3.2. SCOPUS Publications or Similar to SCOPUS Standard

3.2.1. Principal Researchers

N°	Year	Title	Quartile	Authors	DOI	Research Lines	Number of Center's Principal Researchers	Number of Center's researchers from other categories	Number of students	Date of Publication
1	2023	Aprendiendo ciencias desde la infancia a la adultez: historias de vida del estudiantado doctoral chileno y estadounidense en relación con sus experiencias y visiones sobre la naturaleza de la ciencia abierta y cerrada	NA	Marta Alejandra Silva-Fernández, <u>Paulina Constanza Sanzana-Müller</u>	10.15359/ree.27-1.14510	Individual, relational, community, and societal aspects.	1	0	1	01-01-23
2	2023	Adaptation of a mobile app for early anxiety and depression intervention in university students in Chile: participatory study	NA	<u>Daniela Lira</u> , Patricio Caviedes, Vania Martínez	10.1192/bji.2023.1	Detection and early intervention.	1	0	1	24-03-23
3	2024	Suicidal ideation, non-suicidal self-injury and psychopathology in university students: Examining the moderating role of experiential avoidance	NA	Álvaro I. Langer, Carlos Schmidt, Vania Martínez, Scarlett Mac-Ginty, Reiner Fuentes, Daniel Núñez	10.1016/j.jadr.2024.100734	Individual, relational, community, and societal aspects.	3	2	0	14-01-24
4	2024	Characterization of latent classes of early preadolescents from their reports of victimization and bullying – A Latent Class Analysis	NA	<u>Marcela Cárcamo</u> , Patricio Cumsille, Jorge Gaete	10.1007/s42380-024-00247-4	Individual, relational, community, and societal aspects.	1	0	1	10-04-24

3.3. SCIELO Publications or Similar to SCIELO Standard

3.3.1. Principal Researchers

N°	Year	Title	Quartile	Authors	DOI	Research Lines	Number of Center's Principal Researchers	Number of Center's researchers from other categories	Number of students	Date of Publication
1	2023	¿Nativos digitales? Percepción de habilidades en niños y niñas de zonas rurales	NA	Isabel Pavez	10.18861/cied.2023.14.1.3282	Awareness and promotion.	1	0	0	01-06-23

3.4. Scientific Books and Chapters

3.4.1. Principal Researchers

N°	Year	Title	Authors	Reference	ISBN	Research Lines	Number of Center's Principal Researchers	Number of Center's researchers from other categories	Number of students	Date of Publication
1	2022	Intervenciones apoyadas en internet en salud mental	Vania Martínez, <u>Daniela Lira</u>	Pirámide	978-84-368-4576-1	Detection and early intervention.	1	0	1	31-01-22
2	2022	Aplicaciones móviles (apps) en salud mental	Vania Martínez, <u>Daniela Lira</u>	Pirámide	978-84-368-4576-1	Awareness and promotion.	1	0	1	31-01-22
3	2022	Tecnologías digitales y salud mental	Vania Martínez	UNAM, FES Zaragoza	978-607-30-5647-2	Awareness and promotion.	1	0	0	28-02-22
4	2022	Mindfulness y compasión como vía de recuperación y encuentro personal: un estudio de caso en un primer episodio de esquizofrenia	Gerardo Rivera, Reiner Fuentes-Ferrada, Edwin Krogh, Álvaro I. Langer	Pirámide	978-84-368-4672-0	Detection and early intervention.	1	1	0	14-10-22
5	2023	Introduction	Thamara Tapia-Muñoz, Claudia Miranda-Castillo, Vania Martínez	Springer	978-3-031-13029-8	Universal and targeted prevention.	1	0	0	02-01-23

6	2023	Prevention and early treatment of depression through the life course	Vania Martínez, Claudia Miranda-Castillo	Springer	978-3-031-13029-8	Universal and targeted prevention.	1	0	0	02-01-23
7	2023	Digital technology interventions for preventing and treating youth depression	<u>Daniela Lira</u> , Vania Martínez	Springer	978-3-031-13029-8	Universal and targeted prevention.	1	0	1	02-01-23
8	2023	Contemplation of nature to promote mental health and prevent depression in youth	Sebastián Medeiros, Álvaro I. Langer, Sandra Stolzenbach	Springer	978-3-031-13029-8	Awareness and promotion.	1	0	0	02-01-23
9	2023	Internet-based interventions for prevention and early treatment of depression in higher education students	Álvaro Jiménez-Molina, Pamela Franco, Scarlett Mac-Ginty, Vania Martínez	Springer	978-3-031-13029-8	Universal and targeted prevention.	1	2	0	02-01-23
10	2023	Mindfulness and compassion as a path to recovery and personal discovery: a first-episode schizophrenia case study	Gerardo Rivera, Reiner Fuentes-Ferrada, Edwin Krogh, Álvaro I. Langer	Springer	978-3-031-27002-4	Detection and early intervention.	1	1	0	26-04-23
11	2023	Depresión en adolescentes	Vania Martínez	Editorial Universitaria	9789561129955	Individual, relational, community, and societal aspects.	1	0	0	04-05-23
12	2023	Suicidios durante la pandemia: ¿por qué bajan y qué podemos esperar para adelante?	Álvaro Jiménez, Vania Martínez, Fabián Duarte	Festina Lente Ediciones	978-956-6210-06-1	Individual, relational, community, and societal aspects.	1	1	0	10-05-23
13	2023	Abordaje del riesgo suicida mediante tecnologías digitales en estudiantes universitarios	Vania Martínez	Elsevier	9788413824932	Detection and early intervention.	1	0	0	14-09-23
14	2024	Terapia centrada en la compasión y autocompasión en el trastorno límite de la personalidad: oportunidades	Reiner Fuentes-Ferrada, Gerardo Rivera, <u>Jaime</u>	Pirámide	978-84-368-4987-5	Detection and early intervention.	1	1	1	19-09-24

		y consideraciones a partir de un caso clínico	<u>Yáñez Lizana</u> , Álvaro I. Langer							
15	2024	Improving suicide ideation screening with machine learning and questionnaire optimization through feature analysis	Ignacio Martínez, César Astudillo, Daniel Núñez	Springer Cham	978-3-031-76603-9	Detection and early intervention.	1	0	0	17-11-24

3.5. Other Publications

3.5.1. Principal Researchers

N°	Year	Title	Publication category	Other Category	Quartile	Authors	Reference	Research Lines	Number of Center's Principal Researchers	Number of Center's researchers from other categories	Number of students	Date of Publication
1	2022	Intervención temprana en psicosis, una perspectiva clínica	Other	Latindex	NA	Juan Undurraga, Pablo Gaspar, Rubén Nachar, Camila Díaz, Guillermo Rivera, Cristiano Noto	Revista Latinoamericana de Psiquiatría	Detection and early intervention.	1	0	0	30-12-21
2	2022	Salud mental en América Latina durante la pandemia de COVID-19: ¿Qué hemos aprendido? y cuáles son las recomendaciones	Other	Latindex	NA	Enrique Bojórquez, Gisella Vargas, Jeff Huarcaya, Freddy Gonzalo Carrión, J. Nicolás Iván Martínez, Antonio Carlos Toro, Vania Martínez, Paulina Diana Zalzman	Revista Latinoamericana de Psiquiatría	Individual, relational, community, and societal aspects.	1	0	0	01-04-22

3	2022	Instrumentos para evaluar bienestar en adolescentes en Chile: una revisión exploratoria	Other	Lilacs, Latindex	NA	César Cáceres, Juan Ignacio Altamirano, Valeria Benítez, Michelle Concha, Scarlett MacGinty, Álvaro I. Langer	Summa Psicológica UST	Awareness and promotion.	1	1	0	29-07-22
4	2022	Investigaciones en Salud mental infanto-juvenil en Chile durante la pandemia de COVID-19: una revisión de alcance	Other	Lilacs, Latindex	NA	<u>Ignacio Lillo-Cabrera</u> , Antonia Bayo-Burgos, Joaquín Cánepa, Rodrigo Meneses, <u>Marcelo A. Crockett</u> , Vania Martínez	Revista Chilena de Psiquiatría y Neurología de la Infancia y Adolescencia	Individual, relational, community, and societal aspects.	1	0	2	31-08-22
5	2022	Cambio climático y salud mental: conceptos, aproximaciones teóricas y propuestas	Other	Lilacs, Latindex	NA	<u>Tamara Hoffmann</u> , <u>Rosario Valdebenito</u> , Claudia A. Silva, Álvaro I. Langer, Nicole Püschel, Valentina Muñoz-Kortmann, Vania Martínez	Revista Chilena de Psiquiatría y Neurología de la Infancia y Adolescencia	Universal and targeted prevention.	2	0	2	30-12-22
6	2023	Barreras y facilitadores para la búsqueda de ayuda profesional en salud mental, desde la perspectiva de adolescentes con depresión	Other	Latindex	NA	Andrea Landázuri, Carolina Lüttges, Vania Martínez	Revista Chilena de Psiquiatría y Neurología de la Infancia y Adolescencia	Awareness and promotion.	1	0	0	01-08-23

7	2023	Importancia de la evidencia científica en intervenciones escolares en salud mental	Other	EBSCO	NA	Vania Martínez	Estudios Públicos	Awareness and promotion.	1	0	0	01-09-23
8	2024	Consenso internacional sobre medidas de resultado de tratamientos de depresión y ansiedad en población infantojuvenil: recomendaciones para su aplicación en Chile	Other	Lilacs, Latindex	NA	Vania Martínez, Karolin R. Krause, <u>Rosario Valdebenito</u>	Revista Chilena de Psiquiatría y Neurología de la Infancia y Adolescencia	Detection and early intervention.	1	0	1	29-12-23
9	2024	Clients' and therapists' perspectives on the role of therapists' values in psychotherapy	Other	Latindex	NA	Álvaro Jiménez-Molina, María-Luz Bascuñán, Vania Martínez	Praxis Psy	Individual, relational, community, and societal aspects.	1	1	0	23-01-24
10	2024	Uso de anticonceptivos hormonales y depresión en mujeres adolescentes y jóvenes: una revisión de alcance	Other	Lilacs, Latindex	NA	Mónica Cerda, <u>Verónica Garrido</u> , Marcelo A. Crockett, Vania Martínez	Revista Chilena de Psiquiatría y Neurología de la Infancia y Adolescencia	Individual, relational, community, and societal aspects.	1	1	1	17-04-24

3.6. “ISI/WoS Publications or Similar to ISI/WoS Standard”, “SCOPUS Publications or Similar to SCOPUS Standard” “SciELO Publications or Similar to SciELO Standard”, “Books and chapters in books” y “Other Publications [Other Researchers]”

3.6.1. Other researchers

N°	Year	Publication category	Other category	Quartile	Authors	Title	Reference	DOI	Research Lines	Number of Center's researchers from other categories	Number of students	Date of Publication
1	2022	SCIELO	—	NA	Ignacio Olivares, Alicia Figueroa	Análisis de alteraciones del discurso en estados mentales de alto riesgo de psicosis (EMAR): una revisión sistemática	Revista Chilena de Neuropsiquiatría	10.4067/S0717-92272021000400343	Detection and early intervention.	1	1	30-12-21
2	2022	ISI/WOS	—	Q2	Fabián Duarte, Álvaro Jiménez-Molina	A longitudinal nationwide study of psychological distress during the COVID-19 pandemic in Chile	Frontiers in Psychiatry	10.3389/fpsyt.2022.744204	Individual, relational, community, and societal aspects.	1	0	24-02-22
3	2022	ISI/WOS	—	Q1	Fabián Duarte, Álvaro Jiménez-Molina	Suicide and quarantine during the COVID-19 pandemic: Do we know everything?	Social Science & Medicine	10.1016/j.socscimed.2022.115253	Individual, relational, community, and societal aspects.	1	0	06-08-22
4	2022	Other	heiJOURNALS	NA	Lionel Brossi, María Jesús Ibáñez Canelo, Tamara Hoffmann Ferrada, Ana María Castillo, Sandra Cortesi	Youth, media and public discourse during the pandemic in Chile	HCIAS Working Papers on Ibero-America	10.48629/hcias.2022.1.91565	Individual, relational, community, and societal aspects.	1	1	28-10-22
5	2022	ISI/WOS	—	Q1	Reiner Fuentes-Ferrada, Catalina Cerda-Planas, María Beatriz Fernández	Religious coping, experiential avoidance, self-compassion, and post-traumatic stress by COVID-19: a serial mediation study	International Journal of Latin American Religions	10.1007/s41603-022-00184-4	Individual, relational, community, and societal aspects.	1	0	28-11-22
6	2022	Books and chapters in books	—	NA	Álvaro Jiménez Molina, Gabriel Abarca Brown	¿Somos sujetos cerebrales? neurociencias, salud mental y sociedad	Ediciones UDP	Link	Individual, relational, community,	1	0	30-12-22

									and societal aspects.			
7	2022	Books and chapters in books	—	NA	Álvaro Jiménez Molina, Rodrigo de la Fabián	La neuro-digitalización del síntoma en la psiquiatría contemporánea	Ediciones UDP	Link	Individual, relational, community, and societal aspects.	1	0	30-12-22
8	2023	ISI/WOS	—	Q1	Rodrigo De La Fabián, Álvaro Jiménez-Molina, Francisco Pizarro Obaid	A critical analysis of digital phenotyping and the neuro-digital complex in psychiatry	Big Data & Society	10.1177/20539517221149097	Individual, relational, community, and societal aspects.	1	0	22-01-23
9	2023	Scopus	—	NA	Ana Barrera-Herrera, María José Baeza-Rivera, Camila Salazar-Fernández, Diego Manríquez-Robles	Analysis of the mental and physical health symptomatology scale in a sample of emerging and migrant adults in Chile	International Journal of Environmental Research and Public Health	10.3390/ijerph20064684	Detection and early intervention.	1	0	07-03-23
10	2023	ISI/WOS	—	Q1	Claudio Palominos, Alicia Figueroa-Barra, Wolfram Hinzen	Coreference delays in psychotic discourse: widening the temporal window	Schizophrenia Bulletin	10.1093/schbul/sbac102	Detection and early intervention.	1	0	22-03-23
11	2023	ISI/WOS	—	Q2	Nicolás Libuy, Carlos Ibáñez, Ana María Araneda, Paula Donoso, Lorena Contreras, Viviana Guajardo, Adrian P. Mundt	Community-Based prevention of substance use in adolescents: outcomes before and during the COVID-19 pandemic in Santiago, Chile	Prevention Science	10.1007/s11121-023-01539-9	Universal and targeted prevention.	1	0	26-04-23
12	2023	Books and chapters in books	—	NA	Graciela Rojas, Pablo Martínez	La depresión: ¿una enfermedad común?	Editorial Universitaria	Link	Individual, relational, community, and societal aspects.	2	0	04-05-23
13	2023	Books and chapters in books	—	NA	Álvaro Jiménez, Gabriel Abarca	Depresión en Chile: una mirada interseccional desde las ciencias sociales	Editorial Universitaria	Link	Individual, relational, community, and societal aspects.	1	0	04-05-23

14	2023	Books and chapters in books	—	NA	Álvaro Jiménez, M. Graciela Rojas, Ángel Jiménez	Sobreendeudados y deprimidos: salud mental en un país con 4,6 millones de morosos	Festina Lente Ediciones	Link	Individual, relational, community, and societal aspects.	2	0	10-05-23
15	2023	Books and chapters in books	—	NA	Álvaro Jiménez, M. Graciela Rojas, Fabián Duarte	Sindemia, la triple crisis social, sanitaria y económica; y su efecto en la salud mental	Festina Lente Ediciones	Link	Individual, relational, community, and societal aspects.	2	0	10-05-23
16	2023	ISI/WOS	—	Q2	Pablo Martínez, Sergio Gogler, Paula Dagnino, Dante Diez de Medina	Early adverse stress and depression severity: a pilot exploration of mediating psychological mechanisms	Development and Psychopathology	10.1017/S0954579423000688	Individual, relational, community, and societal aspects.	1	0	11-07-23
17	2023	ISI/WOS	—	Q4	Ana Barrera-Herrera, Claudia Riffo-Álvarez, Danahe Fernández-Hernández, Francisca Ortiz-Peña, Camila Salazar-Fernández	Cuestionario Oviedo del Sueño: evidencias de validez y confiabilidad en universitarios chilenos	Revista Iberoamericana de Diagnóstico y Evaluación – e Avaliação Psicológica	10.21865/RIDEP68.2.04	Detection and early intervention.	1	0	26-07-23
18	2023	ISI/WOS	—	Q4	William E. Conlin, Michaela Hoffman, Douglas Steinley, Alvaro Vergés, Kenneth J. Sher	Predictors of symptom course in alcohol use disorder	Alcohol: Clinical and Experimental Research	10.1111/acer.15201	Individual, relational, community, and societal aspects.	1	0	29-09-23
19	2023	ISI/WOS	—	Q2	Milagros Bussio, Tomás Arriaza, María Elena Alvarado, Alvaro Vergés	Psychometric properties of the UPPS-P in Chilean adolescents and adults in treatment	Personality and Individual Differences	10.1016/j.paid.2023.112285	Detection and early intervention.	1	0	01-10-23
20	2023	ISI/WOS	—	Q3	Carolina Sepúlveda, Carlos Ibáñez, Nicolás Libuy, Viviana Guajardo, Ana María Araneda, Lorena Contreras, Paula Donoso, Adrian P Mundt	Facilitating factors and barriers to the implementation of the Icelandic Prevention Model of Adolescent Substance Use in Chile: A focus group study	Health Promotion Practice	10.1177/15248399231201551	Universal and targeted prevention.	1	0	16-10-23

21	2024	Other	Lilacs, Latindex	NA	Carolina Morales, Natalia Martín, Camila Asenjo, Mariam Ferrada, Alicia Figueroa	¿Cómo se está estudiando la co-ocurrencia entre trastorno del espectro autista y disforia de género en la población adolescente?	Revista Chilena de Psiquiatría y Neurología de la Infancia y Adolescencia	Link	Individual, relational, community, and societal aspects.	1	0	29-12-23
22	2024	ISI/WOS	—	Q1	Fabián Duarte, Álvaro Jiménez-Molina	Exploring the impact of social protest on mental health: A study of the 2019 "Social Uprising" in Chile	Social Science & Medicine	10.1016/j.socscimed.2023.116392	Individual, relational, community, and societal aspects.	1	0	04-01-24
23	2024	ISI/WOS	—	Q1	Scarlett Mac-Ginty, <u>Daniela Lira</u> , <u>Ignacio Lillo</u> , Esteban Moraga, César Cáceres, Ricardo Araya, Matthew Prina	Association between socioeconomic position and depression, anxiety and eating disorders in university students: A systematic review	Adolescent Research Review	10.1007/s40894-023-00230-y	Individual, relational, community, and societal aspects.	2	2	16-01-24
24	2024	ISI/WOS	—	NA	Ximena Moreno, María José Monsalves, Sarahí Rueda, Paula Dagnino, Francesca Borghero	Gender differences in life expectancy free of depressive symptoms in Chile between 2003 and 2016	Cambridge Prisms: Global Mental Health	10.1017/gmh.2024.9	Individual, relational, community, and societal aspects.	1	0	23-01-24
25	2024	ISI/WOS	—	Q1	Alvaro Vergés, Tomás Arriaza, Marcela Soto, María Elena Alvarado	Impulsivity and compulsivity dimensions in the prediction of substance use and depressive symptoms among emerging adults	International Journal of Mental Health and Addiction	10.1007/s11469-024-01277-1	Detection and early intervention.	1	0	25-03-24
26	2024	SCIELO	—	NA	Ana Barrera-Herrera, Nayadett Leal-Paredes, Alejandra Cid-Penroz, María José Huerta-Espinoza, Claudia Rizzo-Álvarez, Lea Vallejos-Barrera,	Revisión narrativa del modelo de desarrollo positivo para adultos emergentes chilenos	Universidad y Salud	10.22267/rus.242602.324.	Awareness and promotion.	1	0	08-05-24

					Paola Raipán-Gómez							
27	2024	SCIELO	—	NA	Reiner Fuentes-Ferrada	Jóvenes que no han dejado de creer, pero que creen distinto: reflexiones en torno a la religiosidad juvenil en Chile	Última Década	10.5354/0718-2236.2024.74938	Awareness and promotion.	1	0	03-06-24
28	2024	Other	Latindex	NA	Nadia Ramos, Paula García, María Paz Vega, Natalia Cancino, Susana Campos	Female firefighters' experiences of discrimination and harassment: Implications for institutional gender policy	Ibero-American Journal of Psychology and Public Policy	10.56754/2810-6598.2024.0010	Individual, relational, community, and societal aspects.	1	0	30-07-24
29	2024	ISI/WOS	—	Q3	Ana Barrera-Herrera, Francisca Salinas-Venegas, Valentina González-Maldonado, Leslie Núñez, Claudia Riffo-Álvarez	Adaptación cultural de los instrumentos del Modelo Desarrollo Positivo en adultos emergentes chilenos	Interdisciplinaria	10.16888/interd.2024.41.2.19	Awareness and promotion.	1	0	03-10-24
30	2024	Books and chapters in books	—	NA	Teki Akuetteh, Lionel Brossi, Emma Day, Rys Farthing, Josh Golin, Brian O'Neill	Digital policy trends: regulations, interventions, and policy solutions	Springer Cham	10.1007/978-3-031-69362-5_64	Individual, relational, community, and societal aspects.	1	0	06-12-24
31	2024	Scopus	—	NA	<u>Emmanuel Méndez</u> , Alicia Figueroa-Barra, Cristina Martínez, Eduardo Durán	Explorando el estigma hacia las personas con esquizofrenia en los medios de comunicación y sus discursos privados	Revista Colombiana de Psiquiatría	10.1016/j.rcp.2022.08.003	Awareness and promotion.	1	1	12-12-24

3.7. Collaborative publications

3.7.1. Table of annual collaborative publications

2022								
Category of Publication	1 researcher		2 researchers		3 researchers		4 or more researchers	
	Nº	%	Nº	%	Nº	%	Nº	%
<i>ISI/WoS Publications or Similar to ISI/WoS Standard</i>	10	26.32%	8	21.05%	4	10.53%	3	7.89%
<i>SCOPUS Publications or Similar to SCOPUS Standard</i>	0	0.00%	0	0.00%	0	0.00%	0	0.00%
<i>SciELO Publications or Similar to SciELO Standard</i>	1	2.63%	0	0.00%	0	0.00%	0	0.00%
<i>Books and chapters</i>	5	13.16%	1	2.63%	0	0.00%	0	0.00%
<i>Other Publications</i>	4	10.53%	2	5.26%	0	0.00%	0	0.00%
Total	20	52.63%	11	28.95%	4	10.53%	3	7.89%
2023								
<i>ISI/WoS Publications or Similar to ISI/oOS Standard</i>	18	40.00%	6	13.33%	1	2.22%	1	2.22%
<i>SCOPUS Publications or Similar to SCOPUS Standard</i>	3	6.67%	0	0.00%	0	0.00%	0	0.00%
<i>SciELO Publications or Similar to SciELO Standard</i>	1	2.22%	0	0.00%	0	0.00%	0	0.00%
<i>Books and chapters</i>	7	15.56%	5	11.11%	1	2.22%	0	0.00%
<i>Other Publications</i>	2	4.44%	0	0.00%	0	0.00%	0	0.00%
Total	31	68.89%	11	24.44%	2	4.44%	1	2.22%
2024								
<i>ISI/WoS Publications or Similar to ISI/WoS Standard</i>	11	30.56%	6	16.67%	3	8.33%	3	8.33%
<i>SCOPUS Publications or Similar to SCOPUS Standard</i>	2	5.56%	0	0.00%	0	0.00%	1	2.78%

<i>SciELO Publications or Similar to SciELO Standard</i>	2	5.56%	0	0.00%	0	0.00%	0	0.00%
<i>Books and chapters</i>	2	5.56%	1	2.78%	0	0.00%	0	0.00%
<i>Other Publications</i>	3	8.33%	2	5.56%	0	0.00%	0	0.00%
Total	20	55.56%	9	25.00%	3	8.33%	4	11.11%

3.7.2. Table of collaborative publications complete period

Category of Publication	1 researcher		2 researchers		3 researchers		4 or more researchers	
	Nº	%	Nº	%	Nº	%	Nº	%
<i>ISI/WoS Publications or Similar to ISI/WoS Standard</i>	39	32.77%	20	16.81%	8	6.72%	7	5.88%
<i>SCOPUS Publications or Similar to SCOPUS Standard</i>	5	4.20%	0	0.00%	0	0.00%	1	0.84%
<i>SciELO Publications or Similar to SciELO Standard</i>	4	3.36%	0	0.00%	0	0.00%	0	0.00%
<i>Books and chapters</i>	14	11.76%	7	5.88%	1	0.84%	0	0.00%
<i>Other Publications</i>	9	7.56%	4	3.36%	0	0.00%	0	0.00%
Total of publications	71	59.66%	31	26.05%	9	7.56%	8	6.72%

Annex 4. Organization of Scientific Events

Scope	Year	Title	Type of Event	City	Country	Responsible Researcher	URL
International	2022	Digital interventions in mental health for university students	Seminar	Londres	Inglaterra	Vania Martínez	https://www.imhay.org/2022/05/27/inscripciones-abiertas-a-seminario-sobre-intervenciones-digitales-en-salud-mental-para-estudiantes-universitarios/
National	2022	Communication and health: how to converge health messages to different audiences?	Workshop	Santiago	Chile	Vania Martínez	—
International	2022	IV International Conference: Clinical and Therapeutic Challenges in Psychosis	Conference	Santiago	Chile	Pablo Gaspar	https://www.imhay.org/2022/09/30/imhay-patrocina-la-iv-version-de-la-conferencia-internacional-de-psicosis-desafios-clinicos-y-terapeuticos-en-psicosis/
National	2022	Life histories: theoretical and methodological scopes from a qualitative perspective	Workshop	Santiago	Chile	Marta Silva	—
National	2022	Recommendations for writing scientific articles	Workshop	Santiago	Chile	Jorge Gaete	—
National	2023	Colloquiums Doctorate in Psychology Universidad de Talca	Conference	Talca	Chile	Daniel Núñez	https://www.instagram.com/p/CwQHS3mOpnJ/
National	2023	Training activity "Tips for the writing and publication of opinion columns in the media"	Seminar	Santiago	Chile	Vania Martínez	—
National	2023	Training activity "Analysis of longitudinal data"	Seminar	Santiago	Chile	Álvaro Vergés	—

National	2023	Mental health in higher education students	Seminar	Valparaíso	Chile	Vania Martínez	https://www.instagram.com/p/CwxnzjCuMFh/?img_index=1
National	2024	Training activity "Introduction to qualitative interviews"	Seminar	Santiago	Chile	María Isabel Pavez	—

Annex 5. Education and capacity building**5.1 Capacity building inside MSI Centers**

MSI RESEARCHER	2021 - 2024									TOTAL NUMBER PER MSI RESEARCHER
	NUMBER									
	Undergraduate students			Graduate students						
				Masters			Doctoral			
	F	M	ND	F	M	ND	F	M	ND	TOTAL
Alicia Figueroa	0	2	0	0	0	0	0	0	0	2
Álvaro Langer	8	2	0	0	0	0	1	2	0	13
Carolina Iturra	3	3	0	0	0	0	0	0	0	6
Jorge Gaete	1	1	0	2	2	0	1	0	0	7
Lionel Brossi	0	1	0	0	0	0	0	0	0	1
Marta Silva	0	0	0	1	1	0	1	0	0	3
Pablo Gaspar	0	0	0	4	0	0	1	4	0	9
Scarlett Mac-Ginty	0	1	0	0	0	0	0	0	0	1
Vania Martínez	3	1	0	3	1	0	4	2	0	14
TOTAL	15	11	0	10	4	0	8	8	0	56

5.2. Short-term Traineeships of MSI students

5.2.1. List of Internships

Student name	Institution	Country	Advisor	Project Description	Starting Date [dd/mm/yy]	Ending Date [dd/mm/yy]
Marcela Cárcamo	Griffith University	Australia	Melanie Zimmer-Gembeck	The objective of the internship was to work on the scientific articles associated with the thesis, corresponding to the characterization of bullying classes and latent state transitions	19-01-23	19-04-23
Belén Vargas	University of Melbourne	Australia	Jo Robinson	The objective of the internship was to learn about different aspects related to suicide prevention research with young people, to contribute to Belén's thesis project.	13-10-23	21-01-24
Daniela Lira	Heidelberg University	Alemania	Stephanie Bauer	To adapt and evaluate the feasibility and acceptability of a transdiagnostic intervention based on digital technologies for the indicated prevention of anxiety and/or depression in university students	16-10-23	31-01-24

5.2.2. List of external internships

Intern Type	Intern Name	Academic Degree	Home Institution	Destination Institution	Country	Project Description	Starting Date [dd/mm/yy]	Ending Date [dd/mm/yy]
Investigador	Michael Meizner	Doctorate	University of Illinois Chicago	Millennium Nucleus Imhay	United States of America	The internship consisted in the elaboration of a scientific article on attention deficit hyperactivity disorder and its relationship with suicidal ideation and depression in university students. The data came from the study of mental health in university students in Chile, which is part of the WMH-ICS international network. In addition, Michael participated in several meetings with researchers from the Millennium Nucleus Imhay.	02-01-24	31-01-24
Student	Carla Elizalde Resano	Master	Universidad de Navarra	Universidad de los Andes	Spain	Carla did an internship at the Centro de Investigación Salud Mental Estudiantil (ISME) of the Universidad de los Andes with the principal researcher Jorge Gaete.	01-09-23	12-12-23

						<p>During her stay she collected data on Chilean students regarding mental health stigma, with the purpose of comparing them with a similar population in Spain.</p> <p>This work was directly related to her doctoral thesis entitled "Analysis of Mental Disorder Stigma in Adolescents".</p>		
--	--	--	--	--	--	---	--	--

Annex 6. Networking and other collaborative work**6.1. Networking**

Network Name	Start Date Participation	Date Participation Ending Date	Network Scope	Researchers				Institutions
				From the Center		External		
				Researchers	Postdocs/ Students	Researchers	Postdocs/ Students	
Clinical High Risk Mental State Network	05-11-18	—	N	8	5	30	0	Hospital Clínico de la Universidad de Chile
								Universidad de Talca
								Universidad Austral de Chile
								Hospital Base de Valdivia
								Hospital Base de Osorno
								Hospital de Temuco
								Hospital de los Ángeles
World Mental Health International College Student Initiative (WMH-ICS)	01-10-2019	—	I	8	3	40	0	World Health Organization
								Harvard Medical School
								Columbia University
								National Institute of Psychiatry Ramón de la Fuente Muñiz
								Katholieke Universiteit Leuven
								Vrije Universiteit Amsterdam
								Technical University of Munich
								Curtin University
								University of British Columbia
								University of Chile
								University of Bordeaux

								Chinese University of Hong Kong
								Aga Khan University
								University of Otago
								Ulster University
								Babeş-Bolyai University
								King Faisal Specialist Hospital and Research Centre
								University of Cape Town
								Hospital del Mar Medical Research Institute
								Chalmers University of Technology
Conectados al Sur (Connected to the south)	05-11-18	–	I	1	0	250	0	FCEI Universidad de Chile
								Berkman Klein Center for Internet and Society (Harvard University)
								UNICEF
International Mindfulness Network	01-10-18	–	I	1	0	15	0	Universidad Austral de Chile
								ZHAW Zurich University of Applied Sciences
								Moscow Region State University
								Universidad de Almería
								Università Roma Tre
								University of Social Sciences and Humanities
								HCMC Vietnam National University
Network for the Development	05-11-18	–	I	7	1	6	0	Facultad de Medicina (Universidad de Chile)
								Facultad de Ciencias Físicas y Matemáticas (Universidad de Chile)

of Digital Mental Health								Instituto de la Comunicación e Imagen (Universidad de Chile)
								Facultad de Ciencias Sociales (Universidad de Chile)
								Departamento de Psicoanálisis (Universidad de Antioquia)
								Center for Psychotherapy Research (University of Heidelberg)
								Facultad de Psicología (Universidad CES)

NOMENCLATURE:**[Network Scope]**

[N] National [I] International [LA] Latin American

6.2. Other collaborative activities

Year	Activity Name	Objective	Description	Co-Participants Institutions	Number of Research from the Center	Number of Postdocs/Students from the Center	Number of External Research	Number of External Postdocs/Students	Product	Name of the Center Principals Researchers Participating in the activity
2022	The 8th International Conference on Public Health 2022	Contribute to the dissemination of the Conference	ICOPH 2022 was a platform designed with the purpose of empowering global public health professionals to collaborate,	The International Institute of Knowledge Management, Krida Wacana Christian University, University of Chile, the Udayana University, and	2	0	10	0	International conference	Alicia Núñez, Vania Martínez

			innovate and help to shape the future of global public health. The conference united diverse researches and case studies from all over the world, in parallel sessions while offering many networking and publishing opportunities The Conference was consist of 200+ Participants from 37 Countries across the globe	Millennium Nucleus Imhay						
2022	XXXIX Congress of the Society of Child and Adolescent Psychiatry and Neurology of Chile (SOPNIA)	Contribute to the organization and dissemination of the XXXIX Sopnia Congress	The Congress of the Society of Child and Adolescent Psychiatry and Neurology of Chile is widely recognized nationally. It is attended by experts in	SOPNIA, Colegio Médico de Chile, Colegio de Terapeutas Ocupacionales de Chile, SONEPSYN, ASMI, Sociedad Chilena de Salud Mental, Sociedad Chilena de	5	0	75	0	Congress	<p> Francesca Borguero, Vania Martínez, Pablo Gaspar, Álvaro Jiménez, Álvaro Langer </p>

			<p>psychiatry and neurology who work with children and adolescents. This version was chaired by Francesca Borghero, Imhay's young researcher. 70 presenters and 650 attendees participated in the event.</p>	<p>Pediatría, Sociedad de Epileptología de Chile, Sochitab, Instituto Milenio MIDAP, Núcleo Milenio Imhay, Liga Chilena contra la Epilepsia, Universidad de Talca</p>						
2023	<p>The 9th International Conference on Public Health 2023</p>	<p>Contribute to the dissemination of the Conference</p>	<p>ICOPH 2023 was a international conference designed to bring together experts from various sectors to share cutting-edge research, best practices, and efficient initiatives to address public health issues, while also providing a space for people to connect,</p>	<p>The International Institute of Knowledge Management, International Association on Public Health (IAPH), MAHSA University Malaysia, Millenium Nucleus Imhay, among others</p>	1	0	15	0	International conference	<p>Vania Martínez</p>

			learn, and collaborate to improve everyone's health and well-being. The activity had more than 230 participants from 42 countries.							
2024	The 10th International Conference on Public Health 2024	Participate as a member of the scientific committee of the ICOPH 2024 conference	The ICOPH 2024 is an international conference on public health. The primary goal was to unite scholars, practitioners, and policymakers from around the globe to foster the exchange of ideas, share knowledge, and explore innovative solutions to contemporary public health challenges	The International Institute of Knowledge Management	1	0	58	0	International conference	Vania Martínez
2024	International Association for Suicide Prevention (IASP) - Pan-	Participate as a member of the scientific committee of the IASP Pan-American	The IASP Pan-American Conference 2024 is a scientific meeting aimed at	International Association for Suicide Prevention	2	0	38	0	International conference	Vania Martínez, Daniel Núñez

	American Conference	Conference 2024	bringing together researchers, practitioners and policy makers to share innovative and evidence-based approaches to suicide prevention							
2024	XXXXI Congress of the Society of Child and Adolescent Psychiatry and Neurology of Chile (SOPNIA)	To participate in the scientific committee of the 41st Congress of the Society of Child and Adolescent Psychiatry and Neurology (Sopnia) in Chile	The congress is a scientific meeting with the participation of national and regional researchers, with the purpose of sharing scientific advances, research results and establishing connections among attendees	Society of Child and Adolescent Psychiatry and Neurology	1	1	2	0	National scientific congress	Pablo Gaspar

Annex 7. Outreach

7.1. Outreach activities throughout the period

Year	Event Title	Type of Event	Scope	Target Audience	Date	Region	N° of Student from the Center	N° of Attendees	Duration in days	Participating Researchers	Responsible for the activity
2022	Cyberpsychology and its contribution to mental health	Webinar	N	Professionals in the center's areas	01-04-22	Metropolitana	1	125	1	Vania Martínez	Núcleo Milenio Imhay and Universidad de O'Higgins
2022	Mental Telehealth Manual: Digital Technologies in Clinical Practice	Webinar	N	Professionals in the center's areas	26-05-22	Metropolitana	2	110	1	Vania Martínez	Núcleo Milenio Imhay
2022	Let's talk about suicide prevention	Webinar	N	General public, Undergraduate students, School students	08-09-22	Metropolitana	1	125	1	Vania Martínez	Núcleo Milenio Imhay and Instituto Nacional de la Juventud
2022	Launching of the book "Can I be a scientist: Indigenous women studying science".	Launching of the book	N	General public	21-10-22	Metropolitana	4	32	1	Marta Silva	Editorial Arcano IV and Núcleo Milenio Imhay
2022	Mental health in university students	Conference	N	General public	03-11-22	Metropolitana	10	150	1	Ricardo Araya	Council of rectors of Chilean universities and Núcleo Milenio Imhay
2023	Student welfare and experience in higher education	Seminar	N	Professors at a professional institute and/or technical training center, University professors	17-01-23	Metropolitana	1	50	1	Vania Martínez	Núcleo Milenio EdSUP and Núcleo Milenio Imhay
2023	Evidence-based interventions to prevent suicidal behavior	Seminar	N	Professionals from the center's area, Professionals from other fields	30-03-23	Maule	3	200	1	Daniel Núñez, Álvaro Jiménez	Universidad de Talca and Núcleo Milenio Imhay
2023	Depression: illness or life suffering?	Book launch	N	Professionals from the center's area	04-05-23	Metropolitana	2	110	1	Graciela Rojas	Núcleo Milenio Imhay and Editorial Universitaria
2023	Can I be a scientist? Indigenous women studying science	Book launch	N	General public	05-05-23	de los Ríos	1	30	1	Marta Silva	Núcleo Milenio Imhay and Universidad Austral de Chile
2023	Impacts of COVID-19 on youth mental health and post pandemic challenges	Seminar	I	Professionals from the center's area	17-05-23		6	110	1	Álvaro Langer	Núcleo Milenio Imhay and the Center for Global Health at Oregon State University
2023	Impact of COVID-19 on youth mental health and	Conference	N	General public	19-05-23	Metropolitana	5	75	1	Álvaro Langer	Núcleo Milenio Imhay

	post pandemic challenges										
2023	How is mental health in our university student communities?	Webinar	N	University professors, Professor at a professional institute and/or technical training center, Professionals from the center's area	28-06-23	Metropolitana	4	90	1	Vania Martínez, Scarlett Mac-Ginty	Consejo de Rectores de las Universidades Chilenas and Núcleo Milenio Imhay
2023	Early intervention in psychosis risk: Therapeutic skills for Latin America.	Training course	I	Professionals from the center's area	09-07-23		10	120	1	Alicia Figueroa, Pablo Gaspar, Rocío Mayol Troncoso, Rolando Castillo	The International Early Intervention and Prevention in Mental Health Association (IEPA) and Núcleo Milenio Imhay
2023	Mental Health Leadership	Workshop	N	Elementary school students, High school students	21-07-23	Metropolitana	0	30	1	Vania Martínez	Universidad de Chile, Instituto Nacional and Núcleo Milenio Imhay
2023	Digital mental health: challenges and opportunities in Chile	Seminar	N	Professionals from the center's area, Professionals from other fields	16-10-23	de la Araucanía	0	150	1	Álvaro Jiménez, Graciela Rojas, Ricardo Araya	Instituto Milenio Midap, Universidad de la Frontera and Núcleo Milenio Imhay
2024	5th Anniversary Núcleo Milenio Imhay	Other	N	General public	08-01-24	Metropolitana	10	110	1	Álvaro Langer, Vania Martínez	Núcleo Milenio Imhay
2024	Initial assessment and management of suicidal risk and behavior in adolescents and young adults.	Workshop	L	Secondary school teachers, elementary school teachers	10-04-24	Metropolitana	0	51	1	Vania Martínez	Municipalidad de Renca and Núcleo Milenio Imhay
2024	Strengthening professional skills in the care of LGBTW+ youth in health care settings	Workshop	L	Undergraduate university students	25-04-24	Metropolitana	0	16	1	Marcelo Crockett	Dirección de pregrado, Facultad de Odontología y de Ciencias Químicas y Farmacéuticas y Núcleo Milenio Imhay
2024	School Violence Prevention	Workshop	L	Elementary school teachers, Secondary school teachers	02-05-24	Metropolitana	0	50	1	Jorge Gaete	Municipalidad de Renca and Núcleo Milenio Imhay
2024	Course: Short therapy for depression and anxiety	Workshop	N	Professionals of the center's area	05-06-24	Metropolitana	0	25	5	Vania Martínez	Núcleo Milenio Imhay
2024	Mental health of higher education students: can technology help?	Seminar	N	Professionals of the center's area, Professionals of other areas, Graduate students, University professors	12-06-24	Metropolitana	0	70	1	Graciela Rojas, Vania Martínez, Scarlett Mac-Ginty, Álvaro Jiménez	Instituto Milenio Midap, Universidad de Chile and Núcleo Milenio Imhay

2024	Manual: Affirmative Health Care Skills for LGBTQIA+ Youth	Written and graphic material	N	Undergraduate university students, Graduate students, Professionals of the center's area, Professionals of other areas, Graduate students, University teachers, University teachers	26-06-24	Metropolitana	0	50	1	Marcelo Crockett	Núcleo Milenio Imhay
2024	Workshop: Anxiety and stress: are they the same?	Workshop	N	High school students, Undergraduate university students, Undergraduate university students	27-06-24	Metropolitana	0	50	1	Vania Martínez	LCOY Chile and Núcleo Milenio Imhay
2024	School Violence: Promoting Healthy School Environments	Conference	L	Elementary school teachers, Secondary school teachers	01-08-24	Metropolitana	0	40	1	Carolina Iturra	Municipalidad de Renca and Núcleo Milenio Imhay
2024	Technologies and youth mental health	Conference	L	Graduate students, Professionals of the area of the center	08-08-24	Metropolitana	3	12	1	Vania Martínez, Marta Silva, Álvaro Jiménez, Pablo Martínez	Núcleo Milenio Imhay
2024	Gatekeeper certification	Other	L	Professionals from the center's area, Professionals from other areas	13-08-24	Metropolitana	0	40	1	Vania Martínez	Núcleo Milenio Imhay and Servicio Local de Educación Pública Barrancas
2024	Youth building wellbeing	Other	N	High school students, Undergraduate university students, General public	19-11-24	Metropolitana	0	32	1	Álvaro Jiménez	Núcleo Milenio Imhay and People's Palace Project, of the Queen Mary University of London
2024	Launching: Psychoeducational guide to understanding clinical high-risk mental states.	Conference	N	Undergraduate university students	21-11-24	Metropolitana	0	65	1	Rocío Mayol	Núcleo Milenio Imhay and Universidad San Sebastián
2024	Psychoeducational guide to understanding clinically high-risk mental states. 2nd edition	Written and graphic material	N	General public	22-11-24	Metropolitana	0	65	1	Rocío Mayol	Núcleo Milenio Imhay
2024	Towards a comprehensive mental health law: What changes await us?	Conference	N	Undergraduate university students	22-11-24	Metropolitana	0	40	1	Álvaro Jiménez	Núcleo Milenio Imhay and Universidad San Sebastián

Notes. Scope: L = Local. N = National. I = International.

7.2. Outreach products made throughout the period

Year	Product	Type of Product	Amount	Target audience	Product scope
2023	Psycho-educational video on Eating Disorders	Video/animation	1	High school students, IP or CFT higher education students, Undergraduate university students, General public	National
2024	Flyer “Urban nature and wellness”	Graphic material	1	Elementary school students, High school students, Undergraduate university students	National
2024	Experiential video of the workshop “Urban nature and wellness: Connect your senses”	Audiovisual material	1	General public	National
2024	Workshop: “Urban nature and wellness: Connect your senses”	Workshop	4	High school students	National
2024	Guide: "Connect your senses with nature: A short practical guide to connect with urban nature and enhance your emotional well-being"	Graphic material	1	IP or CFT higher education students, Elementary school students, High school students, Undergraduate university students, General public	National
2024	Video tutorial on how to use the guide “Connect your senses with nature”	Video/animation	1	IP or CFT higher education students, High school students, Undergraduate university students, General public	National
2024	Videos of simulated cases for the correct application of the Suicide Risk Severity Assessment Scale and the Safety Plan	Audiovisual material	3	IP and/or CFT teachers, University teachers, Higher education IP or CFT students, Graduate students, Undergraduate university students, Media, Professionals from other areas, Professionals from the center's area, Elementary school teachers, High school teachers, General public	International
2024	Online course: "Addressing suicidal risk in adolescents and young adults".	Workshop	1	IP and/or CFT teachers, University teachers, Higher education IP or CFT students, Graduate students, Undergraduate university students, Media, Professionals from other areas, Professionals from the center's area, Elementary school teachers, High school teachers, General public	International

7.3. Articles and Interviews

Type of media and scope	Local/Regional		National		International		TOTAL
	N° Interviews	N° Articles	N° Interviews	N° Articles	N° Interviews	N° Articles	
2022							
Written	1	1	2	20	0	0	24
Internet	0	2	6	33	0	7	48
Audiovisual	0	0	19	11	1	0	31
Total	1	3	27	64	1	7	103
2023							
Written	0	5	2	20	0	0	27
Internet	0	5	2	37	0	9	53
Audiovisual	2	0	32	5	0	0	37
Total	2	10	36	62	0	9	119
2024							
Written	0	4	0	20	0	0	24
Internet	0	4	2	60	1	1	68
Audiovisual	3	0	17	8	2	1	31
Total	3	8	19	88	3	2	123
Total							
Written	1	10	4	60	0	0	75
Internet	0	11	10	130	1	17	169
Audiovisual	5	0	68	24	3	1	101
Total	6	21	82	214	4	18	345

Annex 8. Connections with public and private sectors

Year	Activity	Type of Connection [Number]	Type of Activity [Number]	Institution Country	Agent Type [Number]	Economic Sector
2022	Advisor to PAHO/WHO Uruguay	2	7 ^a	Uruguay	2	Medicine and human health
2022	Advisor to the Instituto Nacional General José Miguel Carrera	2	7 ^a	Chile	3	Education
2022	Advisor to the National Youth Institute (INJUV)	2	7 ^a	Chile	2	Public sector
2022	Advisory committee on youth mental health and technology use	2	2	United States of America	2	Medicine and human health
2022	Collaboration agreement with Fundación para la Confianza	2	4	Chile	2	Medicine and human health
2022	Collaboration agreement with Municipalidad de Lo Barnechea	2	4	Chile	2	Public sector
2022	Collaboration agreement with Municipalidad de Ñuñoa	2	4	Chile	2	Public sector
2022	Collaboration agreement with Municipalidad de Renca	2	4	Chile	2	Public sector
2022	Collaboration agreement with Todo Mejora foundation	2	4	Chile	2	Medicine and human health
2022	Collaboration agreement with Wildlife Conservation Society foundation	2	4	Chile	2	Environment
2022	Commission "Salud del Futuro" (Future Health)	2	2	Chile	2	Public sector
2022	Communication campaign "Despierta un Cambio" (Awaken a Change)	2	7 ^b	Chile	1	Processed foods and soft drinks
2022	Consultancy for Municipalidad de Lo Barnechea (Child and Adolescent Office)	2	7 ^a	Chile	2	Public sector
2022	Consultancy for the implementation of the Mental Health Prevention Pilot Program	2	2	Chile	2	Public sector
2022	Intersectoral roundtable for the prevention of suicide behavior in the Maule Region	2	2	Chile	2	Public sector
2022	Intersectoral roundtable for the prevention of suicide behavior in the Metropolitan Region	2	2	Chile	2	Public sector

2022	Radio program "Sintoniza tu salud mental" (Tune in to your mental health)	2	7 ^c	Chile	2	Communications
2022	Technical guide of recommendations for the development of promotional and preventive strategies in mental health and suicide prevention for students in higher education	2	2	Chile	2	Public sector
2022	Training for monitors in suicide prevention	2	3	Chile	2	Public sector
2022	Training in trauma and suicide risk in adolescents and young people	2	3	Chile	2	Public sector
2022	Training on the use of the CAPE-P15 scale in primary health care	2	3	Chile	2	Public sector
2022	Workshops "Seamos Comunidad" (Let's be community)	2	3	Chile	3	Education
2023	Collaboration agreement with Fundación Círculo Polar	2	4	Chile	2	Medicine and human health
2023	Commission against misinformation	2	2	Chile	2	Public sector
2023	Document reviewer "Guidelines for road safety education for health care teams"	2	2	Chile	2	Public sector
2023	Expert judgment committee for clinical guideline on schizophrenia	2	2	Chile	2	Public sector
2023	Higher Education Mental Health Advisory Board	2	2	Chile	2	Public sector
2023	Internal seminar "Proposal of four mental health models for university communities"	2	2	Chile	3	Education
2023	Intersectoral Intersex Health Working Sessions by the Ministry of Health	2	4	Chile	2	Public sector
2023	Jury of the V School Science and Technology Meeting "Valdiciencia Austral"	2	7 ^d	Chile	3	Education
2023	Meeting on the renewal of the National Plan for Suicide Prevention	2	7 ^a	Chile	2	Public sector
2023	Mental health leadership workshop for students	2	3	Chile	3	Education
2023	Methodological consultancy for the process of updating the National Suicide Prevention Program	2	2	Chile	2	Public sector
2023	Roundtable Future Education: Disruptive Perspectives	2	7 ^a	Chile	2	Public sector
2023	Scientific advisory of the School Research and Innovation Program PAR Explora Los Lagos	2	2	Chile	3	Education

2023	Talk "Emerging drugs"	2	3	Chile	2	Public sector
2023	TikTok Latin America Security Advisory Council	2	7 ^a	China	1	ICTs
2023	Training "Prevention of suicidal behavior in educational institutions"	2	3	Chile	2	Public sector
2023	Training "Update on rights and duties of users of the mental health network"	2	3	Chile	2	Public sector
2023	Training on suicide risk assessment	2	3	Chile	2	Public sector
2023	Training on suicide risk assessment	2	3	Chile	2	Medicine and human health
2023	Working table "Legislating on artificial intelligence"	2	7 ^a	Chile	2	Public sector
2023	Workshop "Common Mental Health Problems in Adolescents"	2	3	Chile	2	Public sector
2024	Advisory to the Education Committee of the Chamber of Deputies	2	2	Chile	2	Public sector
2024	Collaboration agreement with Local Conference of Youth Chile (LCOY Chile)	2	4	Chile	2	Environment
2024	Collaboration with Manitos de Confianza	2	4	Chile	3	Education
2024	Delphi study "Understanding the challenges and opportunities for informative clinical trials in digital mental health"	2	2	United Kingdom	3	Education
2024	Evaluation report on the use of scales to assess psychotic symptoms in clinical and research settings.	2	2	United Kingdom	2	Medicine and human health
2024	Intersectoral roundtable for the prevention of suicide behaviour in the Region Los Ríos	2	2	Chile	2	Public sector
2024	Policy Brief National Suicide Prevention Program Update	2	2	Chile	2	Public sector
2024	Recommendations for the diagnosis and treatment of eating disorders in Chile	2	2	Chile	2	Scientific Organization
2024	Support with the dissemination of OLA study	2	2	United Kingdom	2	Arts and culture
2024	Collaboration with Interactive Museum Mirador to implement workshops on contact with nature for high school students	2	2	Chile	2	Education
2024	Technical Committee on general components of digital technologies	2	2	Chile	2	Public sector

Notes. ^a = Consultancy. ^b = Communication campaign. ^c Radio program. ^d Contest.

NOMENCLATURE:

[Type of Connection] [1] Services Contract [2] Cooperation Agreement

[Type of Activity] [1] Development of Studies [2] Project Implementation [3] Training [4] Prospective Activity [5] Scientific Training

[6] Installation of Scientists [7] Others (specify at the table foot other type of activity)

[Agent Type] [1] Industry and Services [2] Organizations and Public Services [3] Educational Sector

Annex 9. Financial Status

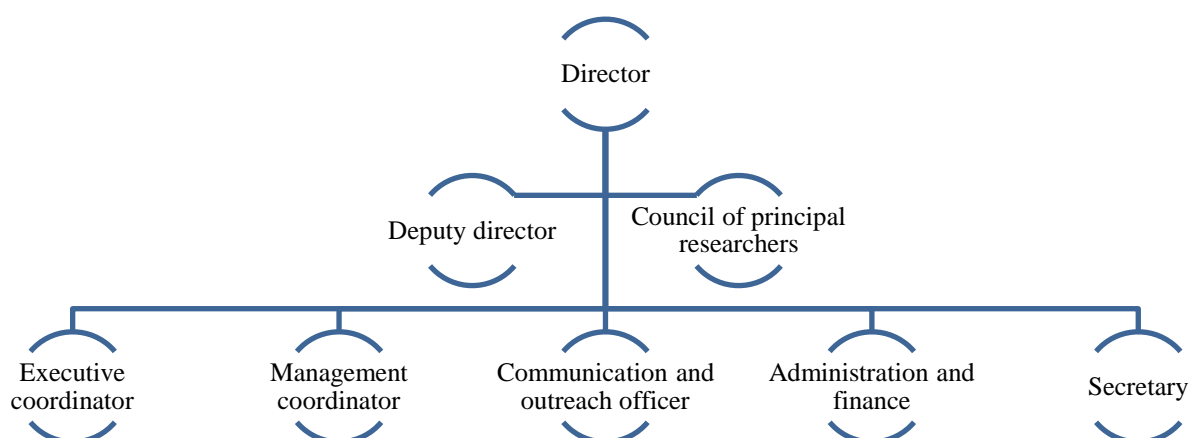
9.1. Total income

Year	Funds	Incomes (Total Execution Period)	
		Amount [\$]	Percentage of total [%]
2022	MSI	120.000.000	25.5
2023	MSI	160.222.000	34.1
2024	MSI	190.000.000	40.4
Total			100

9.2. Expense structure

Type of Expense	Amount 2022 [\$]	Amount 2023 [\$]	Amount 2024 [\$]	Total Amount [\$]
Scientific Staff	32,100,000	50,918,000	86,730,000	169,748,000
Technical Staff	19,900,000	21,900,000	16,760,000	58,560,000
Administrative Staff	3,000,000	3,260,000	3,400,000	9,660,000
Communications Staff	20,540,000	23,300,000	30,800,000	74,640,000
Investments	5,431,070	6,788,121	8,970,000	21,189,191
Infrastructure	-	-	-	-
Consulting	12,309,611	21,192,684	14,221,702	47,723,997
Overhead	6,000,000	7,600,000	9,200,000	22,800,000
Operating expenses	20,719,319	17,041,195	13,918,298	51,678,812

9.3. Organization chart of Imhay



Annex 10. Outstanding Activities

Year	Name of the activity relevant in your discipline	Type of activity relevant in your discipline carried out	Description of the relevant activity in your discipline	Importance in your discipline of the activity	Possibility to maintain or replicate this activity
2022-2024	Research Meetings	Seminar	They correspond to research meetings held for members of the Nucleus, especially for students and young researchers, who are specially invited to present their research work. The purpose of these meetings is to promote the exchange of knowledge among the members of the Nucleus	The activity promotes the exchange of knowledge, collaboration between students and researchers from different research areas of the Nucleus and students receive feedback on their work presented. During the last Research Meeting in 2022, the Senior Researcher Ricardo Araya was invited as a commentator of the work presented by the students and the Minister of Health Ximena Aguilera visited us during the activity, with whom the relationship between research and public policies was discussed	It is difficult to implement after the Nucleus ended
2023	Public hearing about adolescent and youth mental health	Public hearing in process of drafting constitutional proposal	Imhay's director, Vania Martínez, participated in a public hearing with the constituents who were drafting the proposed new constitution. The director of Imhay requested to reinforce more explicitly the mandate of the State so that public policies strengthen the protection of mental health and the rights of children, adolescents and young people	This activity reinforces Imhay's role in strengthening public policies aimed at improving the wellbeing of adolescents and young people	This activity was a unique opportunity and there is no possibility of replicating it unless a new constituent process is opened
2023	Book "Tu mundo emocional" (Your Emotional World)	Book written by Vania Martínez and illustrated by Javiera Suazo	The book is a guide for adolescents to learn about feelings and emotions and to understand that there is nothing wrong with asking for help	This is a publication for non-academic audiences which can contribute to adolescents' psychological wellbeing	It could be replicated in the future
2022-2024	Outreach activities	Seminar, conferences,	Imhay researchers have participated in multiple	Outreach activities organized by other	Imhay researchers will

	organized by other institutions	talks, among others	outreach activities organized by other institutions. Since these are not activities organized by the Nucleus, they are not included in this annual report	institutions reflect the recognition of Imhay researchers at the national level and collaboration with other types of academic and non-academic institutions.	be invited to participate in other outreach activities in the future
--	---------------------------------	---------------------	---	---	--

Annex 11. Negative or positive aspects that you would like to address in order to understand the context in which the center developed its work during the reported period.

Relevant Positive and Negative Aspects

Among the global and national aspects that influenced the work of the Nucleus were the pandemic and the government's interest in young people's mental health. The COVID-19 pandemic and the restrictions to prevent the spread of the virus have had repercussions on the mental health of people, especially young people. This caused mental health issues in youth to take on importance in the media and public and private institutions. In this scenario, Imhay has collaborated since the beginning of the pandemic to contribute to the mental health of adolescents and young people through research, dissemination in the media, and collaborative activities with other institutions, especially public institutions.

The Chilean State, through its various institutions, as well as the government, has shown an interest and concern for the mental health of people, especially of certain social groups, such as young people. This has allowed Imhay to collaborate with various state institutions in working groups in an advisory role to contribute to the mental health of adolescents and young people through public policy.

The negative aspect that influenced the work of the Nucleus is the participation of students in publications. Publications with students are generally done at the end of their academic programs, except for doctoral students, who publish partial results of their theses during their studies. Since students typically work exclusively on their theses, this limits student participation in publications with researchers. During 2022-2023, five publications with former Imhay students were published, which, although were mentioned in the manuscript of the report, are not considered student publications by Millennium Initiative (articles 34, 49, and 50 in Annex 3.1.1 and articles 3 and 6 in Annex 3.5.1).

SWOT Analysis

Strengths

- A solid and broad multidisciplinary group to address adolescent and youth mental health from different perspectives.
- Strong leadership for the fulfillment of the purposes of the Nucleus.
- A strong commitment to scientific dissemination and connection with other societal actors.

Weaknesses

- The center's students were clustered in a group of researchers.
- Collaborative research among researchers at the center could have been higher.
- Low number of internal and external internships.
- Scaling up of interventions could be improved.

Opportunities

- The pandemic put the focus on the mental health of people, especially young people.
- The interest of the government and different public institutions in the mental health of young people.
- The interest of different media, schools, organizations, etc., in contributing to mental health.

Threats

- Public competition for research funds could decrease according to the annual budget of the Chilean state.
- The global climate change scenario could focus on other issues unrelated to mental health.
- The interest of public institutions in mental health could change in the face of a new government or a change in government priorities.

Annex 12. Relevant materials, products and activities carried out by the center

The following images represent different activities carried out by the center. They were classified by the area in which they are presented in this report.

a) Scientific research

Imhay researchers have had outstanding participation in national and international congresses. In the photo below are researchers Álvaro Langer, Jorge Gaete, and Daniel Núñez, who, together with Vania Martínez, organized the seminar entitled “Prevention of Mental Health in Educational Contexts” at the Sonepsyn 2023 Congress (November 18, 2023, Antofagasta, Chile).



The pre-congress workshop “Early Intervention in Psychosis Risk: Therapeutic Skills for Latin America”, highlighted in the Scientific and Capacity Building section of this annual report, was an important activity carried out by Imhay. It was part of the IEPA 14th International Conference on Early Intervention in Mental Health. Besides being a research product done at a congress, it was also an outreach activity. It was a free activity for professionals from Latin America, and more than 150 people participated. In the activity, Imhay researchers Pablo Gaspar, Álvaro Langer, and Rocío Mayol, with Alexander Loch (Universidad de São Paulo), Natalia Jimeno (Universidad de Valladolid), and Ana Calvo (Universidad Complutense de Madrid) worked to translate the recent scientific knowledge into practical recommendations to work in

early intervention with people with high risk of psychosis. This activity was also part of the Clinical High-Risk Mental State Network (July 9, 2023, Switzerland).



b) Formal collaborative networks

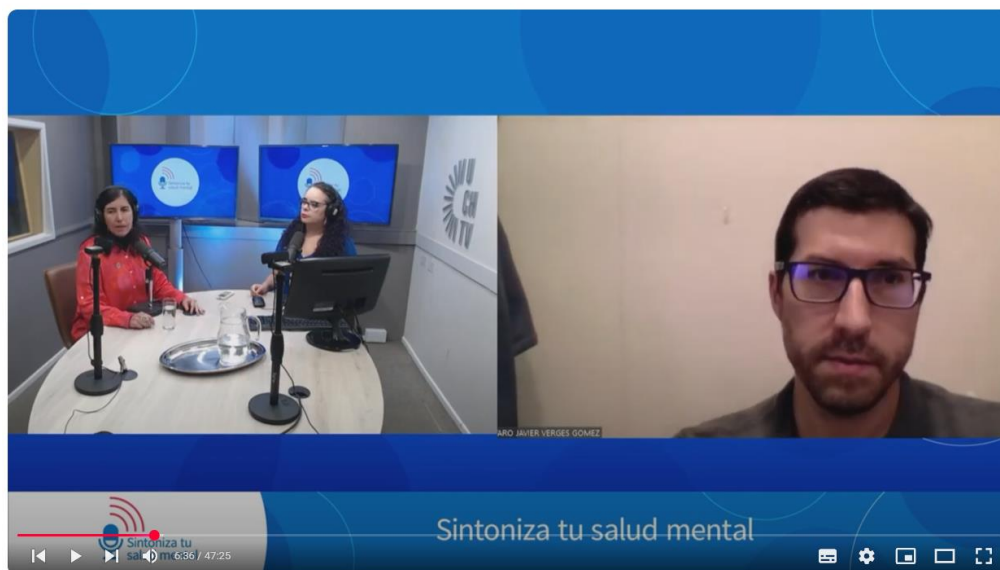
Imhay researchers Álvaro Langer, Marta Silva, Scarlett Mac-Ginty, and Marcelo Crockett were the representatives of Imhay at the annual reunion of the international network World Mental Health – International College Student initiative at Harvard University, Boston, Massachusetts. In the activity, results from different countries were presented, connections with other researchers were established, and future research was planned (July 9 to 12, 2024, United States of America). The information about the network, their members, and articles published can be found on their [website](#).



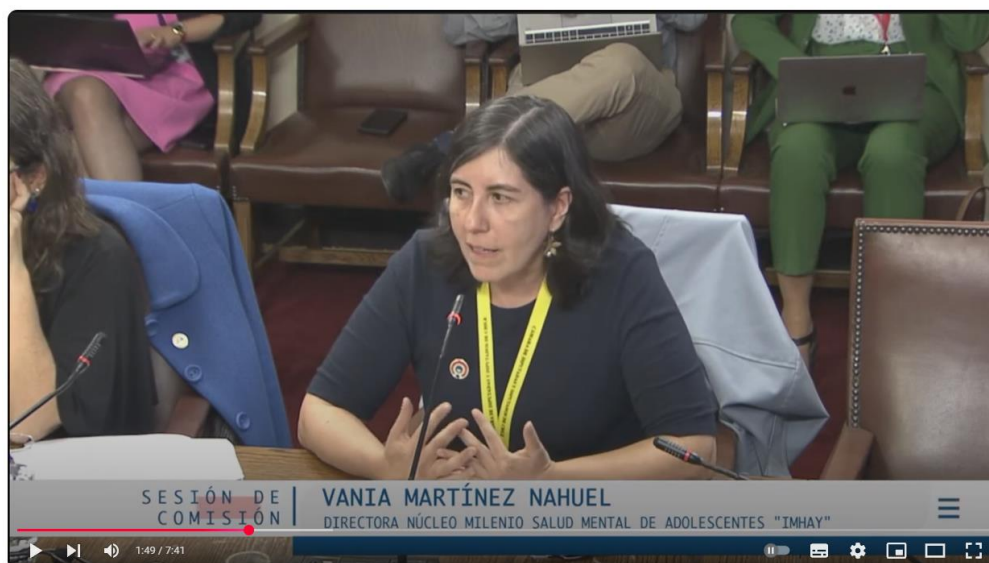
c) Connections with other sectors

As part of the connections with other sectors, Imhay with Radio Universidad de Chile held a radio Program in 2023 called Sintoniza tu Salud Mental (Tune into Your Mental Health), on which mental health issues were discussed. Several Imhay researchers and guests from different institutions participated in the program. Previously, in 2022, Imhay participated in the program Radio Análisis, in which there was a section dedicated to mental health where Imhay researchers participated. People can access the episodes on this [YouTube playlist](#).

In the picture below, Imhay researcher Vania Martínez and Álvaro Vergés talks with Antonella Estévez about changes in the use of alcohol and other drugs among Chilean adolescents and how their perception of risk has changed about what they believe to be harmful consumption.



The director of the Imhay Millennium Nucleus, Vania Martínez, was invited to participate as an expert in the Education Commission of the Chamber of Deputies, where the bill on mental health in higher education was discussed. The intervention of Dr. Martínez is in this [link](#) (April 15, 2024, Valparaíso, Chile).



One of the outreach products made out by the Nucleus consisted of this practical guide to favor the connection with nature and enhance emotional well-being. People can access this guide on this [link](#). This guide was part of a collaboration between Imhay, the Faculty of Veterinary and Animal Sciences, and the Environmental Management and Biodiversity Center from Universidad de Chile to conduct workshops with secondary school students on connecting with nature in the city. The workshops were held in the Mirador Interactive Museum in Santiago, Chile (December 13, 2023, Santiago, Chile).

